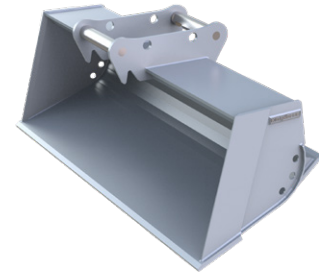


The Ditch Cleaning Bucket is the perfect tool to excavate, load and backfill sand, gravel and soil. Ditch cleaning, grading and levelling of embankments and lawns as well as digging trenches, skips and slopes are other applications for the DC-L series. The integrated quick change adapter is adjusted to the system L-Lock and can be mounted both directions.

Can be used as backhoe bucket or face shovel (except DC01L).

Other adapters on request.



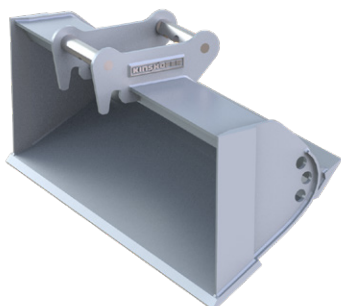
DC08L SYM

- ▷ **Rear cutting edge by default** (from DC02L).
- ▷ Long bucket base for **easy penetration and high excavating capacity**.
- ▷ **Durable** thanks to robust design and use of highly resistant wearout steel. Cutting edges 500HB, bucket base 400HB.
- ▷ For **more flexibility** best in combination **with a tiltable quick coupler**.

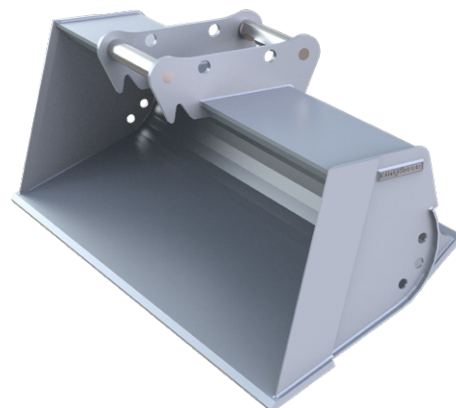
## Ditch Cleaning Bucket DC-L

Type	Volume ISO 7451 (m³/yd³)	Cutting width (mm/in)	Weight (kg/lbs)	Adapter	Operating weight (t/lbs)
DC01L-080	0.040 / 0.052	800 / 31.4	35 / 77	KSW01	0.5-1 / 1,100-2,200
DC01L-100	0.050 / 0.065	1,000 / 39.3	40 / 88	KSW01	0.5-1 / 1,100-2,200
DC02L-085 SYM	0.077 / 0.100	850 / 33.4	75 / 165	KSW01 SYM	1.0-1.8 / 2,200-3,960
DC02L-100 SYM	0.092 / 0.120	1,000 / 39.3	86 / 189.2	KSW01 SYM	1.0-1.8 / 2,200-3,960
DC02L-120 SYM	0.117 / 0.153	1,200 / 47.2	103 / 226.6	KSW01 SYM	1.0-1.8 / 2,200-3,960
DC03L-085 SYM	0.077 / 0.100	850 / 33.4	76 / 167.2	KSW03 SYM	1.8-2.6 / 3,960-5,720
DC03L-100 SYM	0.092 / 0.120	1,000 / 39.3	88 / 193.6	KSW03 SYM	1.8-2.6 / 3,960-5,720
DC03L-120 SYM	0.117 / 0.153	1,200 / 47.2	99 / 217.8	KSW03 SYM	1.8-2.6 / 3,960-5,720
DC05L-100 SYM	0.150 / 0.196	1,000 / 39.3	107 / 235.4	KSW03 SYM	2.6-5.0 / 5,720-11,000
DC05L-120 SYM	0.180 / 0.235	1,200 / 47.2	117 / 257.4	KSW03 SYM	2.6-5.0 / 5,720-11,000
DC05L-140 SYM	0.208 / 0.272	1,400 / 55.1	129 / 283.8	KSW03 SYM	2.6-5.0 / 5,720-11,000
DC06L-100 SYM	0.160 / 0.209	1,000 / 39.3	107 / 235.4	KSW03 SYM	4.5-6.0 / 9,900-13,200
DC06L-120 SYM	0.200 / 0.261	1,200 / 47.2	117 / 257.4	KSW03 SYM	4.5-6.0 / 9,900-13,200
DC06L-140 SYM	0.240 / 0.313	1,400 / 55.1	129 / 283.8	KSW03 SYM	4.5-6.0 / 9,900-13,200
DC06L-150 SYM	0.260 / 0.340	1,500 / 59	135 / 297	KSW03 SYM	4.5-6.0 / 9,900-13,200
DC08L-140 SYM	0.270 / 0.353	1,400 / 55.1	203 / 446.6	KSW08 SYM	5.5-8.5 / 12,100-18,700
DC08L-150 SYM	0.280 / 0.366	1,500 / 59	217 / 477.4	KSW08 SYM	5.5-8.5 / 12,100-18,700
DC10L-150 SYM	0.350 / 0.457	1,500 / 59	225 / 495	KSW08 SYM	8.0-10.0 / 17,600-22,000
DC12L-160 SYM	0.440 / 0.575	1,600 / 62.9	349 / 767.8	KSW08 SYM	10.0-12.0 / 22,000-26,400

Package consists of: ditch cleaning bucket, rear cutting edge (from DC02L), adapter frame for L-Lock



DC02L SYM



DC10L SYM

## Ditch Cleaning Buckets System L-Lock 10-23t / 22,000-50,600lbs

DC-L

The Ditch Cleaning Bucket is the perfect tool to excavate, load and backfill sand, gravel and soil. Ditch cleaning, grading and levelling of embankments and lawns as well as digging trenches, skips and slopes are other applications for the DC-L series. The integrated quick change adapter is adjusted to the system L-Lock. Other adapters on request.

- ▷ **Conical design** with narrowing by 2° on both sides.
- ▷ **Easy penetration and high excavating capacity.**
- ▷ For **more flexibility** best in combination **with a tiltable quick coupler.**
- ▷ **Durable** thanks to robust design and use of highly resistant wearout steel for the bucket base (400HB).



DC15L

### Ditch Cleaning Buckets

Type	Volume ISO 7451 (m³/yd³)	Cutting width (mm/in)	Weight (kg/lbs)	Adapter	Operating weight (t/lbs)
DC15L-180	0.44 / 0.58	1,800 / 70.9	437 / 961	KSW10	10-15 / 22,000-33,000
DC15L-200	0.495 / 0.65	2,000 / 78.7	476 / 1,047	KSW10	10-15 / 22,000-33,000
DC19L-180	0.60 / 0.78	1,800 / 70.9	465 / 1,023	KSW10	15-19 / 33,000-41,800
DC19L-200	0.65 / 0.85	2,000 / 78.7	506 / 1,113	KSW10	15-19 / 33,000-41,800
DC23L-200	0.90 / 1.18	2,000 / 78.7	661 / 1,454	KSW21	19-23 / 41,800-50,600

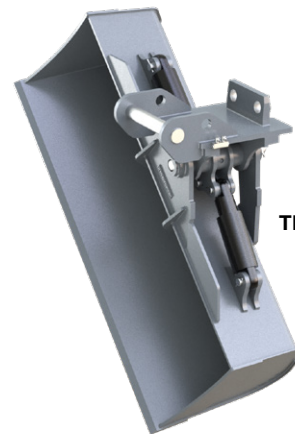
Package consists of: ditch cleaning bucket, KSW-adapter for L-Lock

## Tilt Buckets System L-Lock 10-35t / 22,000-77,000lbs

TB-L

The hydraulically driven tilt bucket with horizontal cylinder is ideal for all daily works in general construction. With a tilt angle of 90° (2 x 45°) it is perfect for levelling and grading as well as for the construction of trenches, skips and slopes. The weld-on quick change adapter is compatible to the system L-Lock. Other adapters on request.

- ▷ **Drainage holes** on both sides.
- ▷ **Conical design** with narrowing by 2° on both sides.
- ▷ **Easy penetration and high excavating capacity.**
- ▷ **Durable** thanks to robust design and use of highly resistant wearout steel for the bucket base (400HB).



TB19L

### Tilt Bucket

Type	Tilt angle	Volume ISO 7451 (m³/yd³)	Cutting width (mm/in)	Weight (kg/lbs)	Adapter	Operating weight (t/lbs)
TB15L-180	2 x 45°	0.44 / 0.58	1,800 / 70.9	599 / 1,318	KSW10	10-15 / 22,000-33,000
TB15L-200	2 x 45°	0.495 / 0.65	2,000 / 78.7	626 / 1,377	KSW10	10-15 / 22,000-33,000
TB19L-180	2 x 45°	0.60 / 0.78	1,800 / 70.9	627 / 1,379	KSW10	15-19 / 33,000-41,800
TB19L-200	2 x 45°	0.65 / 0.85	2,000 / 78.7	656 / 1,443	KSW10	15-19 / 33,000-41,800
TB19L-220	2 x 45°	0.70 / 0.92	2,200 / 86.6	694 / 1,527	KSW10	15-19 / 33,000-41,800
TB23L-200	2 x 45°	0.90 / 1.18	2,000 / 78.7	871 / 1,916	KSW21	19-23 / 41,800-50,600
TB23L-220	2 x 45°	1.00 / 1.31	2,200 / 86.6	915 / 2,013	KSW21	19-23 / 41,800-50,600
TB28L-200	2 x 45°	1.22 / 1.60	2,000 / 78.7	1,161 / 2,554	KSW21	23-28 / 50,600-61,600
TB35L-220	2 x 45°	1.43 / 1.87	2,200 / 86.6	1,550 / 3,410	KSW21	26-35 / 57,200-77,000

Package consists of: tilt bucket, KSW-adapter for L-Lock