



Class 37 - 200t
81,400 - 440,000lbs
Attachments for Excavators

Demolition
Re-Handling
Recycling & Waste Management





KINSHOFER GROUP COMPANY

22 companies,
10 brands,
more than 4,000 products



The Kinshofer Group is one of the world's leading designers and manufacturers of attachments for construction machinery, such as excavators, backhoe loaders, skidsteer loaders, knuckle boom cranes and forklift trucks. The Kinshofer Group is a One-Stop-Attachment-Shop to our customers around the globe.

Day in and day out, all year 'round, people's decisions and needs create demand for transport and infrastructure solutions.

Without the type of product and services the Kinshofer Group provides, the societies, where many of us live, would not function.

Find a wide range of attachments for excavators here and even more on our website kinshofer.com

Simply moving the world with us.



kinshofer.com

Contents

	page
Demolition and Sorting Grabs up to 80t / 176,000lbs	
up to 80t/176,000lbs operating weight Heavy Duty with perforated shells: D40H-P HD up to D70H-P HD	4
Re-handling Clamshell Buckets up to 100t / 220,000lbs	
up to 65t/143,000lbs operating weight with two hydraulic cylinders: C60VHD	5
up to 100t/220,000lbs operating weight with four hydraulic cylinders: C100VHD	6
Timber Grab up to 100t / 220,000lbs	
up to 80t/176,000lbs or 100t/220,000lbs operating weight with hydraulic cylinder: T80VHD	7
Rock Grab up to 40t / 88,000lbs	
up to 40t/88,000lbs operating weight with hydraulic cylinder: R40H	8
Orange Peel Grabs up to 120t / 264,000lbs	
up to 50t/110,000lbs operating weight with hydraulic cylinders (4/5 arms): P51VHD	9
up to 80t/176,000lbs operating weight with hydraulic cylinders (4/5 arms): P80VHD	10
up to 120t/264,000lbs operating weight with hydraulic cylinders (5 arms): P120VHD	11
Mounting Options for Hydraulic Attachments - cardanic and rigid mount	12
Demolition and Scrap Shears up to 100t / 220,000lbs	
Multi-Quick Processors with exchangeable jaws up to 65t/143,000lbs operating weight: MQP	13 et seq
Rotating Shears up to 50t/110,000lbs operating weight: DLC, DLD, DLP	15
Rotating Shears with DemaPower up to 65t/143,000lbs operating weight: DRC, DRD, DRP	16
Mobile Scrap Shears up to 80t/176,000lbs operating weight: DXS	17 et seq
Static Pulverisers up to 65t/143,000lbs operating weight: DSP	19
Rotating Pulverisers up to 65t/143000lbs operating weight: DSP-R	20
Concrete Crusher up to 80t/176,000lbs operating weight: DCC	21
Earth Drills and Torque Heads up to 50t / 110,000lbs	
Earth Drills up to 45t/99,000lbs operating weight: 35000MAX, 42000MAX, 65000MAX and PA Augers	22 et seq
Torque Heads up to 50t/110,000lbs operating weight: 100000MAX, 150000MAX	24
Accessories and mounting options for Earth Drills and Torque Heads	25
Hydraulic Breakers up to 200t / 440,000lbs	
up to 200t/440,000lbs operating weight with two tools: KFX	26
Tools for KFX	27
Mounting Options for Hydraulic Attachments - rigid mount	28
Contact	29

Catalog valid from August 01, 2023

Demolition and Sorting Grabs HD D40H-P HD / D50H-P HD / D70H-P HD

Robust multi-purpose grab with perforated shells, for excavators up to 80t / 176,000lbs operating weight, the HD D Series grabs are ideal for demolition and sorting of all kinds of building materials.

- ▷ **Robust Delta-box frame with dust-proof axle bearing points.** Perforated shells let fine dust and gravel through without large pieces getting caught.
- ▷ **Durable and reversible cutting edges** can be used to pick up different materials, with their tips. Cutting edges can be turned three ways, reducing replacement costs.
- ▷ **Robust, fully integrated rotator** with sturdy slewing ring to withstand external forces, with pressure relief valve to ensure overload protection, and connecting hoses **protected inside the hub.**
- ▷ **Exceptional closing forces** achieved by a horizontally positioned hydraulic cylinder that is protected by the bucket carrier.
- ▷ **Cylinder is hydraulically cushioned.**



D70H-P-150HD

Heavy Duty Demolition and Sorting Grabs

Type	Width E (mm/in)	Opening A (mm/in)	Height C max. (mm/in)	Volume (liter/c.y.)	Weight (kg/lbs.)	Load capacity (kg/lbs)	Closing force (kN/lbf)	Torque (Nm/ft.lbs)	Operating weight (t/lbs)
D40H-P-125HD	1,250 / 49.2	2,325 / 91.5	1,480 / 58.3	960 / 1.26	2,010 / 4,422	13,500 / 29,700	92 / 20,240	7,000 / 5,163	30 - 50 / 66,000 - 110,000
D50H-P-140HD	1,400 / 55.1	2,325 / 91.5	1,495 / 58.9	1,075 / 1.41	2,390 / 5,258	16,500 / 36,300	92 / 20,240	7,000 / 5,163	35 - 60 / 77,000 - 132,000
D70H-P-150HD	1,500 / 59.1	2,700 / 106.3	1,820 / 71.7	1,660 / 2.17	4,165 / 9,163	23,500 / 51,700	140 / 30,800	9,000 / 6,638	50 - 80 / 110,000 - 176,000

Package consists of: demolition and sorting grab, integrated rotation with sturdy slewing ring, cutting edges and non-return valve

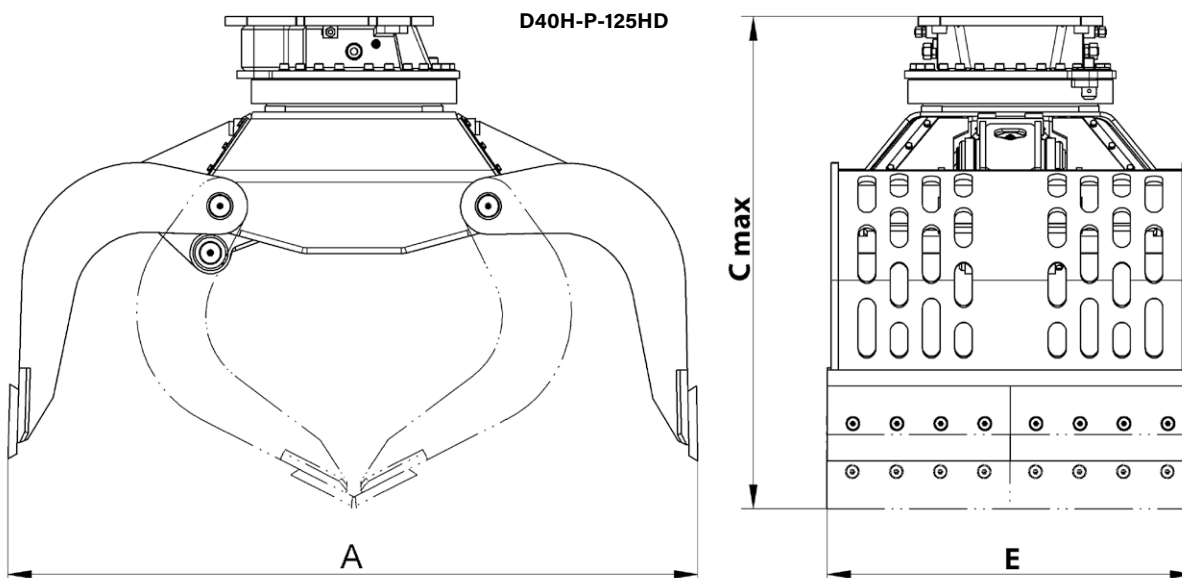
Accessories

Type	Description
KM 690	adapter for rigid mounting – up to 70t/154,000lbs
OQ	bolt-on-adapter for Oilquick – up to 70t/154,000lbs available
	adapters for quick change systems from other manufacturers or different sizes available on request

Requirements of carrier machine

Operating pressure (open/close):	max. 35 MPa (350 bar) / 5,070 psi
Pump capacity (open/close):	D40/D50: max. 120 l/min / 32.0 GPM; D70: max. 200 l/min/ 53.0 GPM
Operating pressure (rotate):	max. 14 Mpa (140 bar) / 2,030 psi
Pump capacity (rotate):	40 - max. 60 l/min / 10.5 - max. 16.0 GPM

Technical drawings



Durable Re-handling Clamshell Bucket, especially for loading bulk materials for excavators from 30t / 66,000lbs to 45t / 99,000lbs, as well as re-handling excavator from 40t / 88,000lbs to 65t / 143,000lbs.

- ▷ **Optimal loading** due to high volume of the torsion-resistant shells and precise positioning thanks to **integrated rotation**.
- ▷ **Long life** is ensured due to the use of 500HB steel in the manufacture of cutting edges. Shell back walls (8mm/0.3in, 400HB) also resist highly abrasive materials.
- ▷ Bearing points with **specially coated bushings and hardened pins**.
- ▷ With **integrated rotation**: Swivel and bevel sealed. Rotary feedthrough and motor accessible directly.
- ▷ **Excellent digging characteristics** are the result of high closing forces due to two vertical cylinders.
- ▷ **Non-return valve** is optionally available.



C60VHD-32

Re-handling Clamshell Buckets with open shells C60VHD (closed version C on request)

Type	Opening (mm/in)	Width E (mm/in)	Height C (mm/in)	Volume (liter/c.y)	Weight (kg/lbs)	Load capacity (kg/lbs)
C60VHD-180-24	2,400 / 94.5	1,800 / 70.9	2,500 / 98.4	1,800 / 2.35	2,380 / 5,236	9,000 / 19,800
C60VHD-200-24	2,400 / 94.5	2,000 / 78.7	2,500 / 98.4	2,000 / 2.62	2,450 / 5,390	9,000 / 19,800
C60VHD-220-24	2,400 / 94.5	2,200 / 86.6	2,500 / 98.4	2,200 / 2.88	2,530 / 5,566	9,000 / 19,800
C60VHD-180-26	2,600 / 102.4	1,800 / 70.9	2,740 / 107.9	2,300 / 3.01	2,420 / 5,324	9,000 / 19,800
C60VHD-200-26	2,600 / 102.4	2,000 / 78.7	2,740 / 107.9	2,500 / 3.27	2,500 / 5,500	9,000 / 19,800
C60VHD-220-26	2,600 / 102.4	2,200 / 86.6	2,740 / 107.9	2,750 / 3.60	2,580 / 5,676	9,000 / 19,800
C60VHD-180-28	2,800 / 110.2	1,800 / 70.9	2,880 / 113.4	2,700 / 3.53	2,480 / 5,456	9,000 / 19,800
C60VHD-200-28	2,800 / 110.2	2,000 / 78.7	2,880 / 113.4	3,000 / 3.92	2,560 / 5,632	9,000 / 19,800
C60VHD-220-28	2,800 / 110.2	2,200 / 86.6	2,880 / 113.4	3,300 / 4.32	2,640 / 5,808	9,000 / 19,800
C60VHD-180-32	3,200 / 126.0	1,800 / 70.9	2,990 / 117.7	3,600 / 4.71	2,560 / 5,632	9,000 / 19,800
C60VHD-200-32	3,200 / 126.0	2,000 / 78.7	2,990 / 117.7	4,000 / 5.23	2,640 / 5,808	9,000 / 19,800
C60VHD-220-32	3,200 / 126.0	2,200 / 86.6	2,990 / 117.7	4,400 / 5.76	2,720 / 5,984	9,000 / 19,800
C60VHD-250-32	3,200 / 126.0	2,500 / 98.4	2,990 / 117.7	5,000 / 6.54	2,920 / 6,424	9,000 / 19,800

Package consists of: re-handling clamshell bucket, **KINSHOFER** rotation (pin-Ø 70mm/2.76in / lug distance 227mm/8.9in)

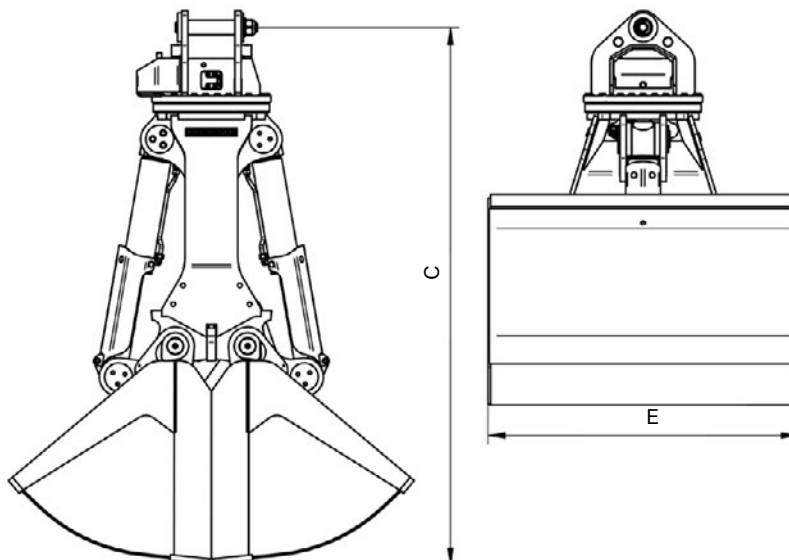
Accessories

Type	Description
KM 501 RD50	upper suspension without pendulum damper
KM 680 C60VHD	scraper, weight approx. 360 kg/792lbs- specify width and opening when ordering apart

Requirements of carrier machine

Operating pressure (open/close):	max. 35 MPa (350 bar) / 5,070 psi
Pump capacity (open/close):	120 - max. 200 l/min / 32.0 - max. 53.0 GPM
Operating pressure (rotate):	max. 14 MPa (140 bar) / 2,030 psi
Pump capacity (rotate):	20 - 30 l/min / 5.0 - 8.0 GPM

Technical drawings



Re-handling Clamshell Bucket up to 100t / 220,000lbs

C100VHD

Durable Re-handling Clamshell Bucket, especially for loading bulk materials for excavators from 60t / 132,000lbs to 80t / 176,000lbs, as well as re-handling excavator from 80t / 176,000lbs to 100t / 220,000lbs.

- ▷ **Optimal loading** due to high volume of the torsion-resistant shells and precise positioning thanks to **integrated rotation**.
- ▷ **Long life** is ensured due to the use of 500HB steel in the manufacture of cutting edges. Shell back walls (8mm/0.3in, 400HB) also resist highly abrasive materials. Bearing points with **specially coated bushings and hardened pins**.
- ▷ **Shells equipped with four loading eyes** – one at each edge and **stopping grids at each side**.
- ▷ With **integrated rotation**: Swivel and bevel sealed. Rotary feedthrough and motor accessible directly.
- ▷ **Excellent digging characteristics** are the result of high closing forces due to four vertical cylinders.
- ▷ **Non-return valve** is optionally available.



Re-handling Clamshell Buckets C100VHD

Type	Opening A (mm/in)	Width E (mm/in)	Height C (mm/in)	Volume (liter/c.y.)	Weight (kg/lbs)	Load capacity (kg/lbs)
C100VHD-220-39	3,900 / 153.5	2,200 / 86.6	3,475 / 186.8	7,000 / 9.16	5,200 / 11,440	12,000 / 26,400

Note: other widths and volumes on request

Package consists of: re-handling clamshell bucket, **KINSHOFER** rotation (pin-Ø 80mm/3.15in / lug distance 200mm/7.9in)

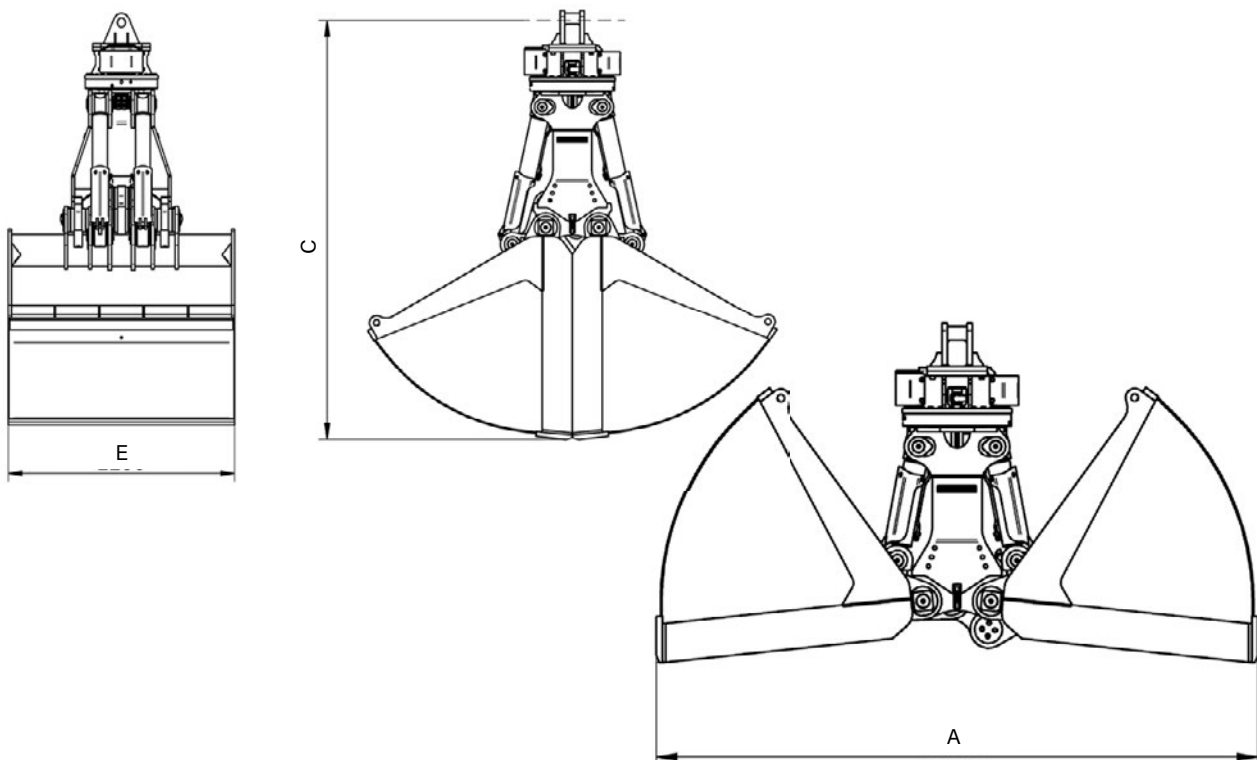
Accessories

Type	Description
KM 501 RD120	upper suspension without pendulum damper

Requirements of carrier machine

Operating pressure (open/close):	max. 35 MPa (350 bar) / 5,070 psi
Pump capacity (open/close):	200 - max. 400 l/min / 53.0 - max. 105.0 GPM
Operating pressure (rotate):	max. 14 MPa (140 bar) / 2,030 psi
Pump capacity (rotate):	20 - 40 l/min/ 5.0 - 10.5 GPM

Technical drawings



Request? scs@kinshofer.com

Timber grab for mobile excavators from 40t/88,000lbs to 80t/176,000lbs and for static excavators from 80t/176,000lbs to 100t/220,000lbs operating weight.

- ▷ **Long life** is ensured due to the use of 400HB steel in the manufacture of cutting edges.
- ▷ **Reduced wear** resulting from generously dimensioned bearing system.
- ▷ **Robust rotation** integrated in the center part, with hose guard.
- ▷ Optimal plunge into the log pile thanks to the **large opening**; precise positioning due to the **integrated rotation**.
- ▷ **Cylinder with end position damping**.
- ▷ **High closing forces** of up to 60kN/13,200lbf at an operating pressure of 35MPa/5,070psi, varies depending on width.



Request? scs@kinshofer.com

Timber Grab T80VHD

Type	Width E (mm/in)	Opening A (mm/in)	Height max. C (mm/in)	Dimension D (mm/in)	Volume (m ² /cord)	Weight (kg/lbs)	Load capacity (kg/lbs)	Closing force (kN/lbf)
T80VHD-1,75	810 / 31.9	3,250 / 128	3,120 / 123	1,475 / 58	1.75 / 1.17	2,180 / 4,796	15,000 / 33,000	60 / 13,200
T80VHD-2,00	810 / 31.9	3,410 / 134	3,200 / 126	1,600 / 63	2.00 / 1.34	2,280 / 5,016	15,000 / 33,000	58 / 12,760
T80VHD-2,50	810 / 31.9	3,770 / 148	3,400 / 134	1,780 / 70	2.50 / 1.68	2,340 / 5,148	15,000 / 33,000	52 / 11,440
T80VHD-3,00	810 / 31.9	4,060 / 160	3,560 / 140	1,950 / 77	3.00 / 2.01	2,400 / 5,280	15,000 / 33,000	46 / 10,120

Package consists of: timber grab, **KINSHOFER** rotation with sturdy slewing ring and hose guard, non-return valve

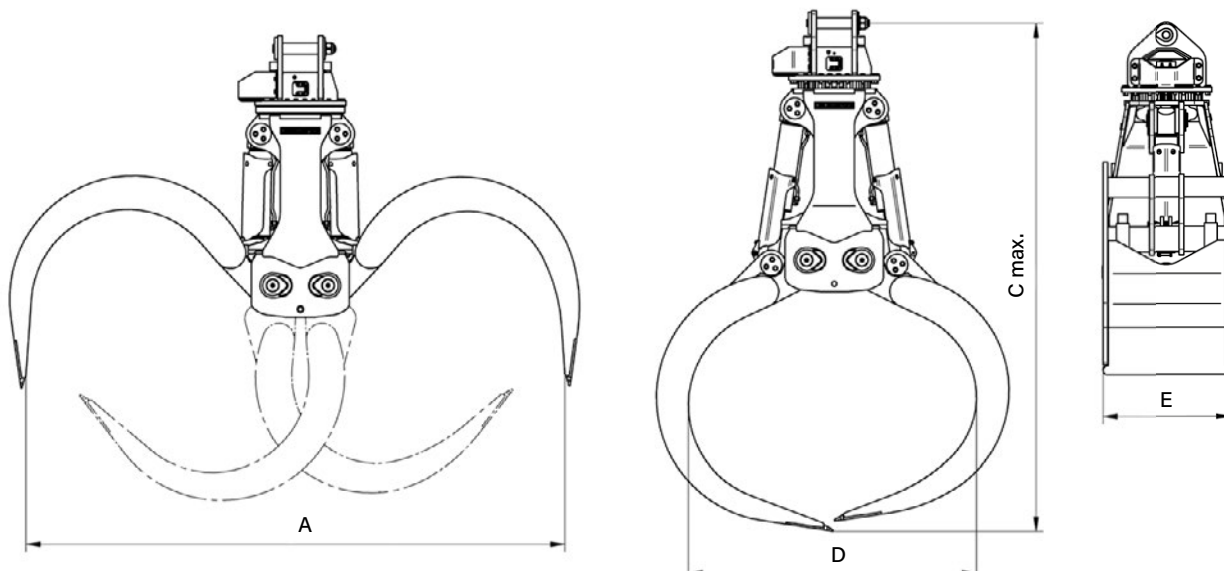
Accessories

Type	Description
KM 501 RD120	upper suspension without pendulum damper

Requirements of carrier machine

Operating pressure (open/close):	max. 35 MPa (350 bar) / 5,070 psi
Pump capacity (open/close):	120 - 200 l/min / 32.0 - 53.0 GPM
Operating pressure (rotate):	14 - max. 20 MPa (140 - max. 200 bar) / 2,030 - max. 2,900 psi
Pump capacity (rotate):	25 - 60 l/min / 6.5 - 16.0 GPM

Technical drawings



Rock grab for excavators from 27t / 59,400lbs up to 40t / 88,000lbs operating weight, depending on the size, for the positioning and handling of natural rocks.

- ▷ For **rigid or cardanic mounting**.
- ▷ **Robust, fully integrated rotation** with sturdy slewing ring to withstand external forces, with connecting hoses located inside the hub. Hydraulic quick exchange systems are mountable directly. **Integrated pressure relief valve** against overcharge.
- ▷ **Exceptional closing forces** through two horizontally positioned hydraulic cylinders that are protected by the bucket carrier.
- ▷ **Large gripping volume** due to widely spaced pivots.
- ▷ **Integrated non-return valve** guarantees secure handling of loads.
- ▷ **Cylinders are hydraulically cushioned**.



R40H

Rock Grab R40H

Type	Width E (mm/in)	Opening A (mm/in)	Height C max. (mm/in)	Volume (m ² /cords)	Weight (kg/lbs)	Load capacity (kg/lbs)	Operating weight (t/lbs)
R40H-0,60	1,020 / 40.2	2,684 / 105.7	1,651 / 65.0	0.60 / 0.40	2,050 / 4,510	7,000 / 15,400	27 - 40 / 59,400 - 88,000

Package consists of: rock grab, integrated rotation with sturdy slewing ring and non-return valve

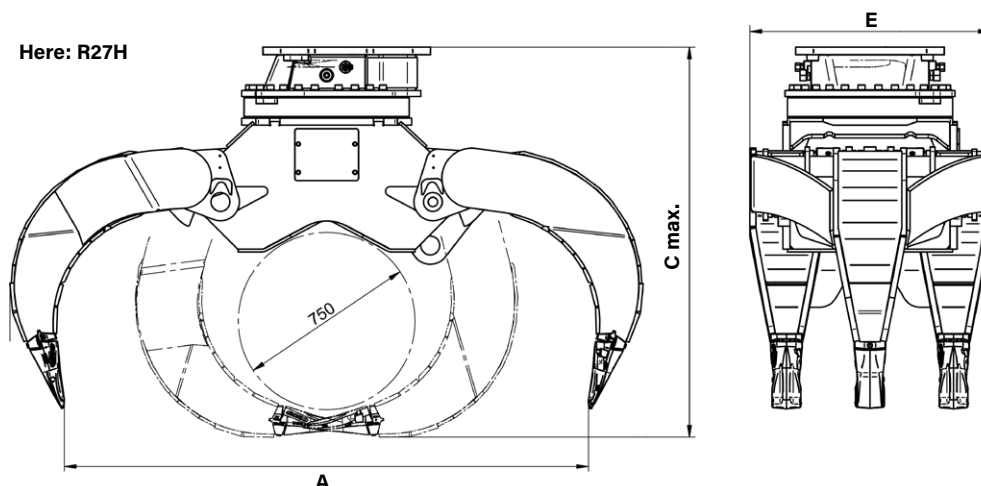
Accessories

Type	Description
KM 690 40t	adapter for rigid mounting – up to 40t/88,000lbs
OQ80/4 rigid	bolt-on adapter for Oilquick OQ – up to 70t/154,000lbs
KSW21/25 rigid	bolt-on adapter for system L-Lock KMS21/25L / KHS21/25L – up to 40t/88,000lbs
	adapters for quick change systems from other manufacturers or different sizes on request

Requirements of carrier machine

	R40H
Operating pressure (open/close):	max. 35 MPa (350 bar) / 5,070 psi
Pump capacity (open/close):	75 - max. 150 l/min / 20 - max. 40 GPM
Hydraulic connection (open/close / rotate):	25 S / 16 S
Operating pressure (rotate):	max. 14 MPa (140 bar) / 2,030 psi
Pump capacity (rotate):	20 - max. 50 l/min / 5 - max. 13 GPM

Technical drawing



Orange peel grab with 4 or 5 tines and 1,000l / 1.31c.y. up to 1,500l / 1.96c.y. volume for the handling of bulky scrap with excavators from 36t / 79,200lbs to 50t / 110,000lbs operating weight - for heavy duty tasks.

- ▷ With 4 or 5 tines in different forms H, W, T.
- ▷ Hydraulic cylinders are fitted with **replaceable piston rod protection** and are **hydraulically cushioned**.
- ▷ **Oil distribution and hydraulic hoses are protected** in the carrier.
- ▷ **Reinforced tines** made of wear-resistant steel 400HB.
- ▷ **Weld-on tips** made of high resistant forged and tempered steel 500HB.
- ▷ **Accurate fittings** eliminate tine distorsion, **solid end stops** (open & close).
- ▷ **Reinforced bolts**, large bearing surface for bolts, specially coated **solid steel bushings**.
- ▷ **Robust, fully integrated rotation** with sturdy slewing ring with internal hoses guarantees optimum force transmission and prevents hose break. The **integrated pressure relief valve** protects against overcharge.
- ▷ **Non-return valve** is optionally available.



Request? exc@kinshofer.com

Orange Peel Grab P51VHD

Type	Width E (closed) (mm/in)	Opening A (mm/in)	Height C max. (closed) (mm/in)	Volume (liter/c.y.)	Number of tines (pcs.)	Weight (kg/lbs)	Load capacity (kg/lbs)
P51VHD-1000-4W	1,610 / 63.4	2,410 / 94.8	2,200 / 86.6	1,000 / 1.31	4	1,740 / 3,828	10,000 / 22,000
P51VHD-1000-4T	1,610 / 63.4	2,410 / 94.8	2,200 / 86.6	1,000 / 1.31	4	1,570 / 3,454	10,000 / 22,000
P51VHD-1000-5H	1,630 / 64.2	2,440 / 96.1	2,200 / 86.6	1,000 / 1.31	5	2,100 / 4,620	10,000 / 22,000
P51VHD-1000-5W	1,630 / 64.2	2,440 / 96.1	2,200 / 86.6	1,000 / 1.31	5	2,050 / 4,510	10,000 / 22,000
P51VHD-1000-5T	1,630 / 64.2	2,440 / 96.1	2,200 / 86.6	1,000 / 1.31	5	1,830 / 4,026	10,000 / 22,000
P51VHD-1250-5H	1,830 / 72.0	2,650 / 104.3	2,415 / 95.1	1,250 / 1.64	5	2,200 / 4,840	10,000 / 22,000
P51VHD-1250-5W	1,830 / 72.0	2,650 / 104.3	2,415 / 95.1	1,250 / 1.64	5	2,150 / 4,730	10,000 / 22,000
P51VHD-1500-4H	1,870 / 73.6	2,830 / 111.4	2,500 / 98.4	1,500 / 1.96	4	1,980 / 4,356	10,000 / 22,000
P51VHD-1500-4W	1,870 / 73.6	2,830 / 111.4	2,500 / 98.4	1,500 / 1.96	4	1,880 / 4,136	10,000 / 22,000
P51VHD-1500-5H	1,870 / 73.6	2,830 / 111.4	2,500 / 98.4	1,500 / 1.96	5	2,300 / 5,060	10,000 / 22,000
P51VHD-1500-5W	1,870 / 73.6	2,830 / 111.4	2,500 / 98.4	1,500 / 1.96	5	2,200 / 4,840	10,000 / 22,000
P51VHD-1500-5T	1,870 / 73.6	2,830 / 111.4	2,500 / 98.4	1,500 / 1.96	5	1,970 / 4,334	10,000 / 22,000

Package consists of: orange peel grab, integrated rotation with sturdy slewing ring, head plate, hose guard and bolt-on bottom plate with welded lifting eye

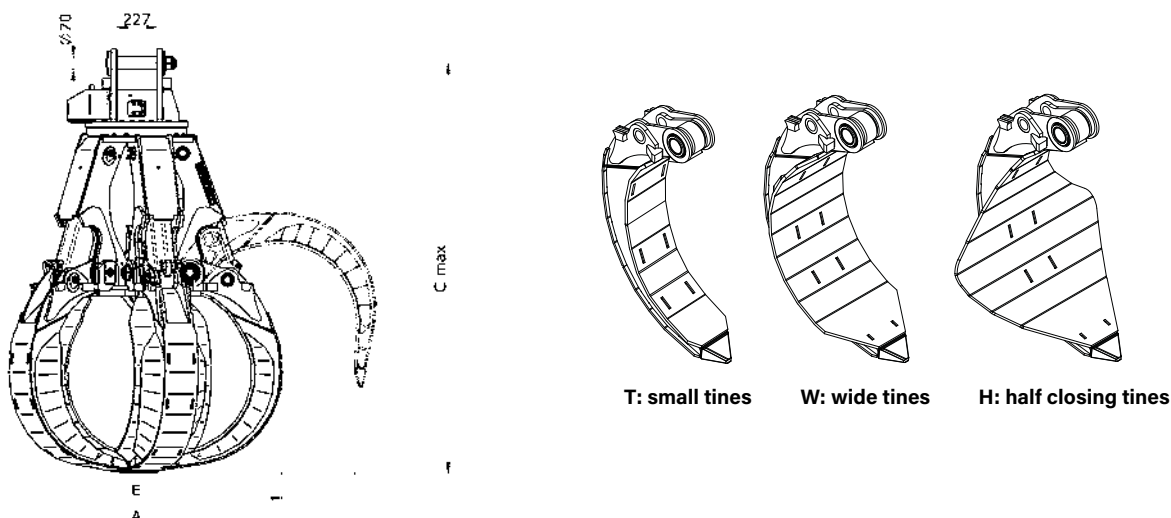
Accessories

Type	Description
KM 501 RD50	upper suspension without pendulum damper adapters for quick change systems from other manufacturers or different sizes on request

Requirements of carrier machine

Operating pressure (open/close):	max. 35 MPa (350 bar) / 5,070 psi
Pump capacity (open/close):	120 - max. 200 l/min / 32 - max. 53 GPM
Operating pressure (rotate):	14 - max. 25 MPa (140 - max. 250 bar) / 2,030 - max. 3,620 psi
Pump capacity (rotate):	20 - max. 50 l/min / 5 - max. 13 GPM

Technical drawing



Orange Peel Grabs Heavy Duty up to 80t / 176,000lbs

P80VHD

Orange peel grab with 4 or 5 tines and 1,500l / 1.96c.y. up to 3,000l / 3.92c.y. volume for the handling of bulky scrap with excavators from 50t / 110,000lbs to 80t / 176,000lbs operating weight - for heavy duty tasks.

- ▷ With **3 different volumes and shell forms H, W and T.**
- ▷ Hydraulic cylinders are fitted with **replaceable piston rod protection** and are **hydraulically cushioned.**
- ▷ **Oil distribution and hydraulic hoses are protected** in the carrier.
- ▷ **Reinforced tines** made of wear-resistant steel 400HB.
- ▷ **Weld-on tips** made of high resistant forged and tempered steel 500HB.
- ▷ **Accurate fittings** eliminate tine distorsion, **solid end stops** (open & close).
- ▷ **Reinforced bolts**, large bearing surface for bolts, specially coated **solid steel bushings.**
- ▷ **Robust, fully integrated rotation** with sturdy slewing ring with internal hoses guarantees optimum force transmission and prevents hose break. The **integrated pressure relief valve** protects against overcharge.
- ▷ **Non-return valve** is optionally available.



Request? scs@kinshofer.com

Orange Peel Grab P80VHD Heavy Duty

Type	Width E (closed) (mm/in)	Opening A (mm/in)	Height C max. (closed) (mm/in)	Volume (liter/c.y.)	Number of tines (pcs.)	Weight (kg/lbs)	Load capacity (kg/lbs)
P80VHD-1500-4T	2,010 / 79.1	2,770 / 109.1	2,770 / 109.1	1,500 / 1.96	4	2,500 / 5,500	10,000 / 22,000
P80VHD-2000-5H	2,070 / 81.5	3,180 / 125.2	2,970 / 116.9	2,000 / 2.62	5	3,200 / 7,040	10,000 / 22,000
P80VHD-2000-5W	2,070 / 81.5	3,180 / 125.2	2,970 / 116.9	2,000 / 2.62	5	3,000 / 6,600	10,000 / 22,000
P80VHD-2000-5T	2,070 / 81.5	3,180 / 125.2	2,970 / 116.9	2,000 / 2.62	5	2,780 / 6,116	10,000 / 22,000
P80VHD-2500-5H	2,200 / 86.6	3,360 / 132.3	3,065 / 120.7	2,500 / 3.27	5	3,310 / 7,282	10,000 / 22,000
P80VHD-2500-5W	2,200 / 86.6	3,360 / 132.3	3,065 / 120.7	2,500 / 3.27	5	3,110 / 6,842	10,000 / 22,000
P80VHD-2500-5T	2,200 / 86.6	3,360 / 132.3	3,065 / 120.7	2,500 / 3.27	5	2,890 / 6,358	10,000 / 22,000
P80VHD-3000-5H	2,325 / 91.5	3,540 / 139.4	3,155 / 124.2	3,000 / 3.92	5	3,420 / 7,524	10,000 / 22,000
P80VHD-3000-5W	2,325 / 91.5	3,540 / 139.4	3,155 / 124.2	3,000 / 3.92	5	3,220 / 7,084	10,000 / 22,000

Package consists of: orange peel grab, integrated rotation with sturdy slewing ring, head plate, hose guard and bolt-on bottom plate with welded lifting eye

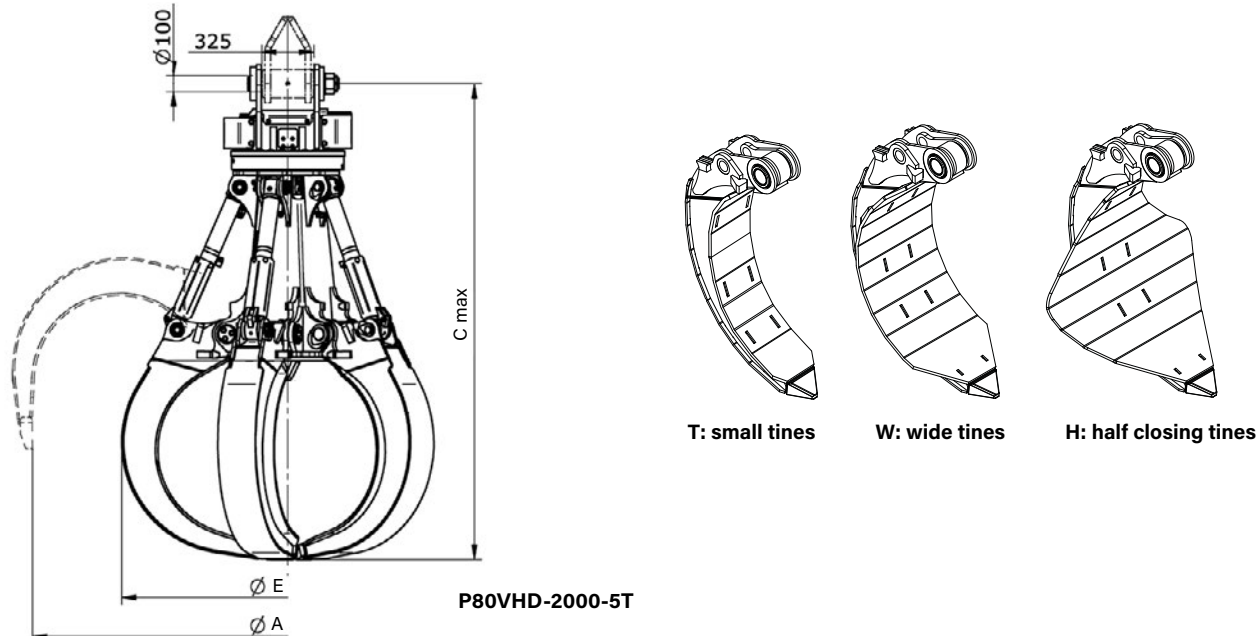
Accessories

Type	Description
KM 501 RD120	upper suspension without pendulum damper adapters for quick change systems from other manufacturers or different sizes on request

Requirements of carrier machine

Operating pressure (open/close):	max. 35 MPa (350 bar) / 5,070 psi
Pump capacity (open/close):	max. 350 l/min / 92.5 GPM
Operating pressure (rotate):	max. 20 MPa (200 bar) / 2,900 psi
Pump capacity (rotate):	20 - max. 60 l/min / 5.0 - max. 16.0 GPM

Technical drawing



P80VHD-2000-5T

Orange peel grab with 5 tines and 2,000 l or 3,000 l / 6.62c.y. or 3.92c.y. volume for the handling of bulky scrap with excavators from 80t / 176,000lbs to 120t / 264,000lbs operating weight - for heavy duty tasks.

- ▷ With **2 different volumes and 3 shell forms H, W and T.**
- ▷ Hydraulic cylinders are fitted with **replaceable piston rod protection** and are **hydraulically cushioned.**
- ▷ **Oil distribution and hydraulic hoses are protected** in the carrier.
- ▷ **Reinforced tines** made of wear-resistant steel 400HB.
- ▷ **Weld-on tips** made of high resistant forged and tempered steel 500HB.
- ▷ **Accurate fittings** eliminate tine distortion, **solid end stops** (open & close).
- ▷ **Reinforced bolts**, large bearing surface for bolts, specially coated **solid steel bushings.**
- ▷ **Robust, fully integrated rotation** with sturdy slewing ring with internal hoses guarantees optimum force transmission and prevents hose break. The **integrated pressure relief valve** protects against overcharge.
- ▷ **Non-return valve** is optionally available.



Request? scs@kinshofer.com

Orange Peel Grab P120VHD Heavy Duty

Type	Width E (closed) (mm/in)	Opening A (mm/in)	Height C max. (mm/in)	Volume (liter/c.y.)	Number of tines	Weight (kg/lbs)	Load capacity (kg/lbs)
P120VHD-2000-5H	2,280 / 89.8	3,200 / 126.0	3,180 / 125.2	2,000 / 2.62	5	4,570 / 10,054	10,000 / 22,000
P120VHD-2000-5W	2,280 / 89.8	3,200 / 126.0	3,180 / 125.2	2,000 / 2.62	5	4,370 / 9,614	10,000 / 22,000
P120VHD-2000-5T	2,280 / 89.8	3,200 / 126.0	3,180 / 125.2	2,000 / 2.62	5	4,220 / 9,284	10,000 / 22,000
P120VHD-3000-5H	2,390 / 94.1	3,910 / 153.9	3,350 / 131.9	3,000 / 3.92	5	4,700 / 10,340	10,000 / 22,000
P120VHD-3000-5W	2,390 / 94.1	3,910 / 153.9	3,350 / 131.9	3,000 / 3.92	5	4,500 / 9,900	10,000 / 22,000
P120VHD-3000-5T	2,390 / 94.1	3,910 / 153.9	3,350 / 131.9	3,000 / 3.92	5	4,350 / 9,570	10,000 / 22,000

Package consists of: orange peel grab, integrated rotation with sturdy slewing ring, head plate and hose guard

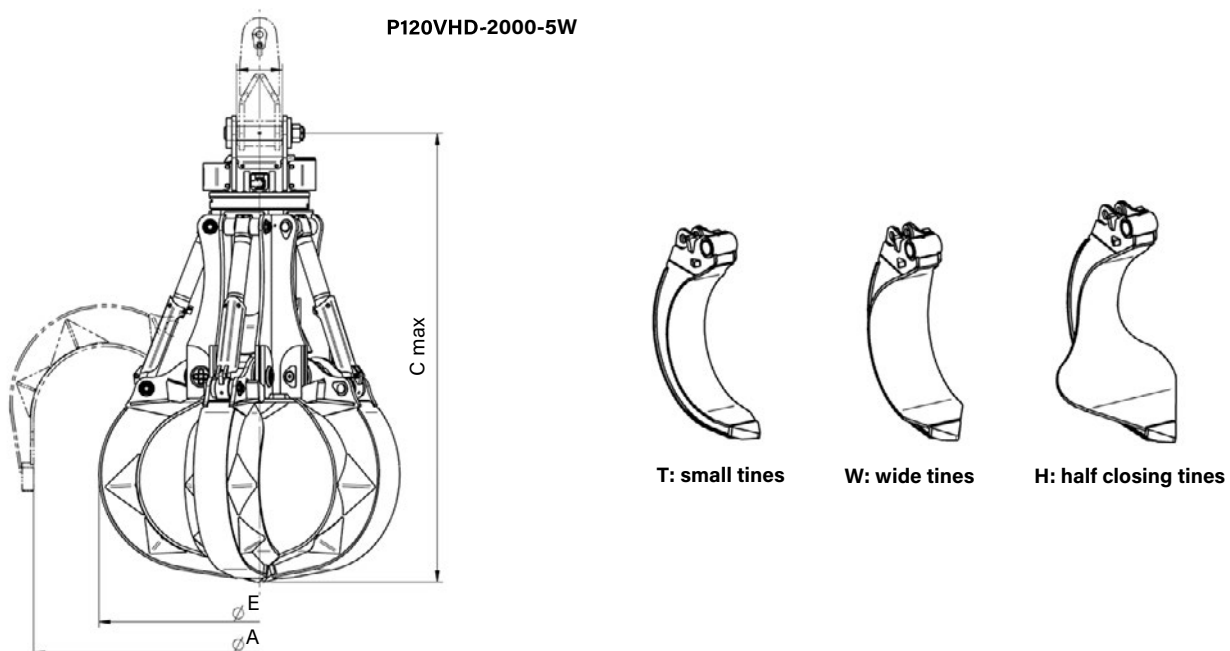
Accessories

Type	Description
KM 501 RD120	upper suspension without pendulum damper adapters for quick change systems from other manufacturers or different sizes on request

Requirements of carrier machine

Operating pressure (open/close):	max. 35 MPa (350 bar) / 5,070 psi
Pump capacity (open/close):	200 - 350 l/min / 53.0 - 92.5 GPM
Operating pressure (rotate):	14 - 25 MPa (140 - 250 bar) / 2,030 - 3,620 psi
Pump capacity (rotate):	20 - 50 l/min / 5.0 - 13.0 GPM

Technical drawings



Mounting Options for Hydraulic Attachments - cardanic and rigid mount

KM 501 - upper suspension without pendulum damper - specify excavator type when ordering



Type	for rotators of grabs	Upper connection rotator (width x pin-Ø) (mm/in)
KM 501 RD50	C60VHD / P40VHD, P51VHD / T40VHD	225 x 70 / 8.9 x 2.76
KM 501 RD120	C100VHD / P80VHD, P120VHD / T80VHD, T100VHD	325 x 100 / 12.8 x 3.94

OQ cardanic - upper suspension with pendulum damper incl. adapter „Oilquick“ and hoses



Type	Operating weight (t/lbs)
OQ80 cardanic	45 - 70 / 99,000 - 154,000

SW cardanic - upper suspension with pendulum damper incl. adapter „Liebherr“



Type	Operating weight (t/lbs)
SW66 cardanic	28 - 45 / 61,600 - 99,000
SW66 Likufix cardanic*	28 - 45 / 61,600 - 99,000
SW77 cardanic	45 - 60 / 99,000 - 132,000
SW77 Likufix cardanic*	45 - 60 / 99,000 - 132,000

*incl. hoses

CW cardanic - upper suspension with pendulum damper incl. adapter „Verachtert“



Type	Operating weight (t/lbs)
CW45 cardanic**	25 - 40 / 55,000 - 88,000
CW55 cardanic**	35 - 65 / 77,000 - 143,000
CW70 cardanic	65 - 90 / 143,000 - 198,000

**also available as smaller S-version

KM 690 - adapter for rigid mount



Type	Operating weight (t/lbs)
KM 690 40t	up to 40 / 88,000
KM 690 50t	up to 50 / 110,000
KM 690 70t	up to 70 / 154,000

OQ - bolt-on adapter for system „Oilquick“ incl. hoses



Type	for attachments	Operating weight (t/lbs)
OQ80/2 rigid	breakers	25 - 43 / 55,000 - 94,600
OQ80/3 rigid	compactors, planers	25 - 43 / 55,000 - 94,600
OQ80/4 rigid	grabs, shears	25 - 43 / 55,000 - 94,600
OQ90/3 rigid	compactors, planers	50 - 70 / 110,000 - 154,000
OQ90/4 rigid	grabs, shears	50 - 70 / 110,000 - 154,000

SW - bolt-on adapter for system „Liebherr“



Type	Operating weight (t/lbs)
SW66 rigid	28 - 45 / 61,600 - 99,000
SW66 Likufix rigid***	28 - 45 / 61,600 - 99,000
SW77 rigid	45 - 60 / 99,000 - 132,000
SW77 Likufix rigid***	45 - 60 / 99,000 - 132,000

***incl. hoses

CW - bolt-on adapter for system „Verachtert“



Type	Operating weight (t/lbs)
CW45 rigid****	25 - 40 / 55,000 - 88,000
CW55 rigid****	35 - 65 / 77,000 - 143,000
CW70 rigid	65 - 90 / 143,000 - 198,000

****also available as smaller S-version

Note: adapters for quick change systems for other manufacturers or other sizes on request

Multi-Quick Processors up to 65t / 143,000lbs

MQP

Used for cutting and crushing concrete with steel reinforcement and cutting steel structures, the **KINSHOFER** Multi-Quick Processor with DemaPower and DemaLink was developed for primary and secondary demolition. It has six convenient jaw options: combi, demolition, pulveriser, steel, tank, universal and wood jaws.

- ▷ The patented DemaPower cylinder provides **up to 20% more power** and reduces **cycle times to under 5 seconds**.
- ▷ **Rotation circuit filters.**
- ▷ Twin rotation motors for **extra rotation power**.
- ▷ Guide plate at pivot point for more **precise alignment** and **greater jaw stability**.
- ▷ **All teeth and cutting blades are exchangeable.**
- ▷ Bearing points engineered for **optimum load handling** and **reduced wear**.
- ▷ With the integrated DemaLink the **jaw set can be exchanged** on site in **less than 10 minutes**.



MQP with
Combi jaws

Multi-Quick Processor MQP without jaws

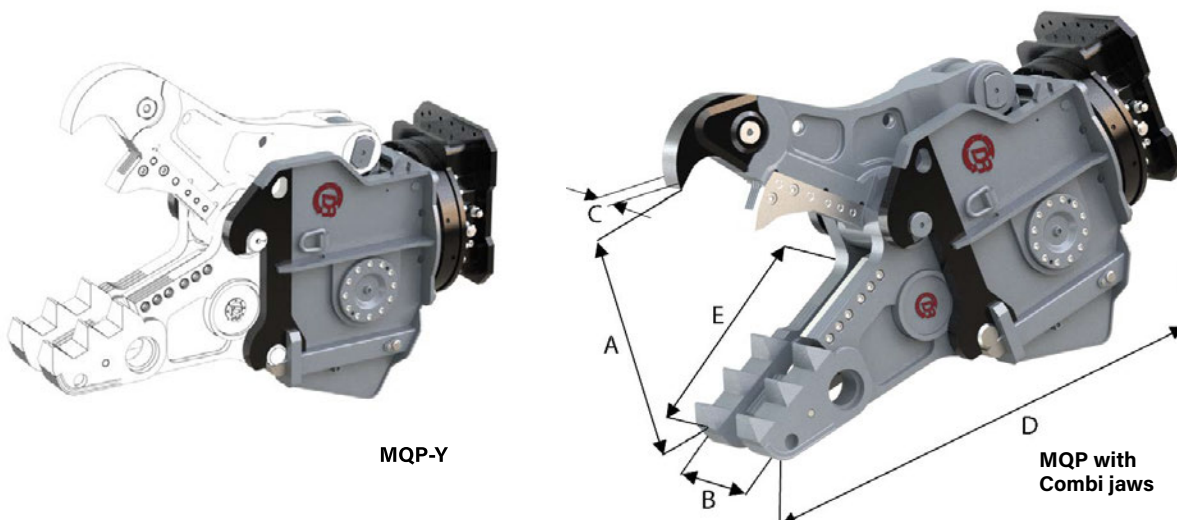
Type	Operating weight (t/lbs)	Weight (kg/lbs)	Height (mm/in)	Width (mm/in)	Depth (mm/in)	Cycle times (open / close) (sec)
MQP-45-Y	32 - 50 / 70,400 - 110,000	1,825 / 4,015	1,330 / 52.4	720 / 28.3	1,290 / 50.8	2.0 / 2.9
MQP-60-Y	45 - 65 / 99,000 - 143,000	2,440 / 5,368	1,450 / 57.1	880 / 34.6	1,485 / 58.5	2.0 / 2.8

Package consists of: Multi-Quick Processor, integrated rotation with 2 motors

Requirements of carrier machine

	MQP-45	MQP-60
Operating pressure (open/close):	max. 38 MPa (380 bar) / 5,510 psi	max. 38 MPa (380 bar) / 5,510 psi
Pump capacity (open/close):	200 - max. 300 l/min / 53.0 - max. 79.5 GPM	300 - max. 400 l/min / 79.5 - max. 105.0 GPM
Operating pressure (rotate):	max. 14 MPa (140 bar) / 2,030 psi	max. 14 MPa (140 bar) / 2,030 psi
Pump capacity (rotate):	40 - max. 60 l/min / 10.5 - max. 16.0 GPM	40 - max. 60 l/min / 10.5 - max. 16.0 GPM

Technical drawings



MQP-Y

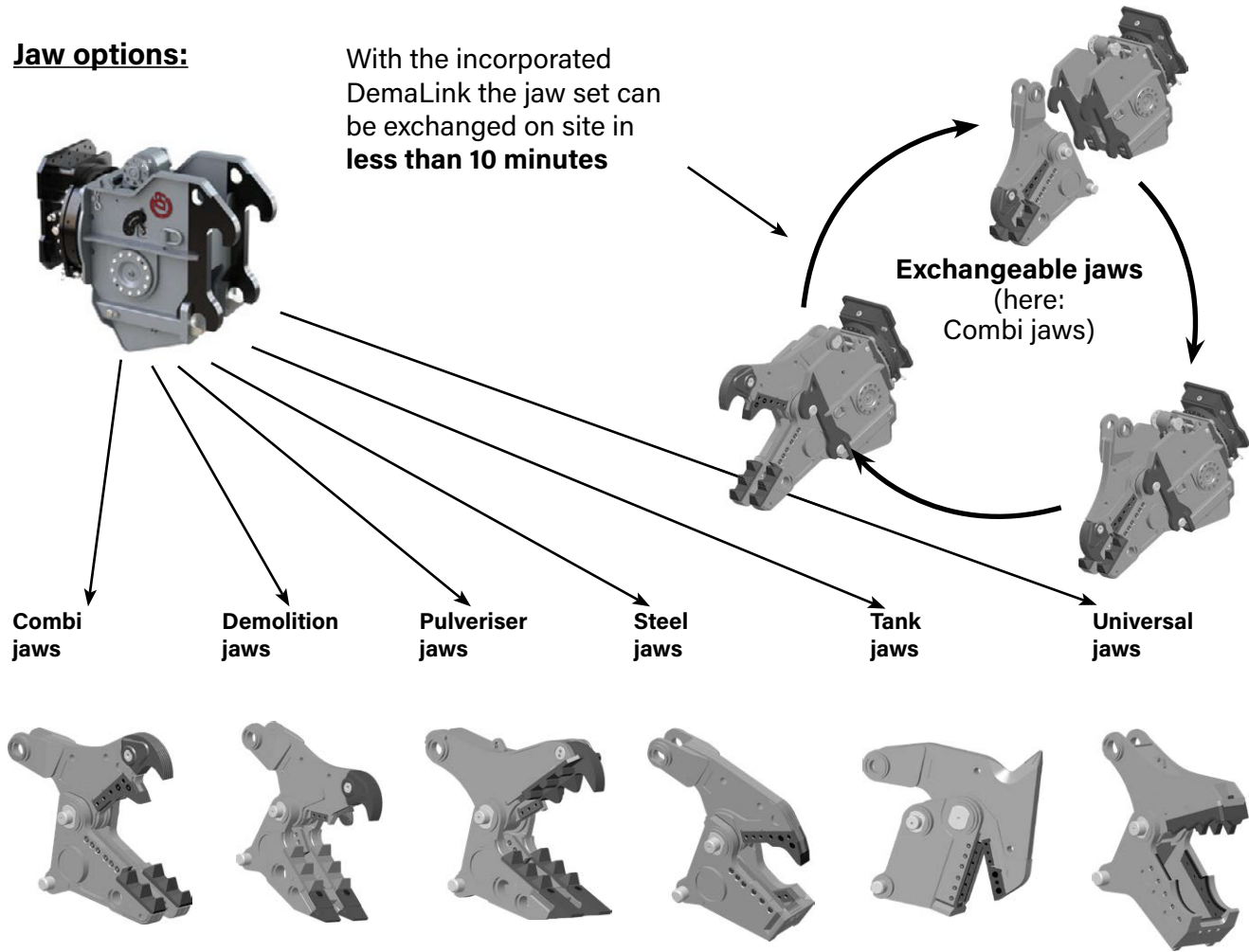
MQP with
Combi jaws

Multi-Quick Processor Jaws up to 65t / 143,000lbs

MQP

Jaw options:

With the incorporated DemaLink the jaw set can be exchanged on site in less than 10 minutes



Request? exc@kinshofer.com

Multi-Quick Processor Jaws

Type	Weight (complete with yoke) (kg/lbs)	Weight jaw set (kg/lbs)	Closing force* (t/lbs)	Jaw opening A (mm/in)	Jaw depth E (mm/in)	Lower jaw width B (mm/in)	Upper jaw width C (mm/in)	Height D (mm/in)
Combi jaws:								
MQP-45-C	3,365 / 7,403	1,540 / 3,388	130 / 286,000	980 / 38.6	990 / 39	450 / 17.7	100 / 3.9	2,360 / 92.9
MQP-60-C	4,525 / 9,955	2,085 / 4,587	150 / 330,000	1,150 / 45.3	1,050 / 41.3	480 / 18.9	100 / 3.9	2,600 / 102.4
Demolition jaws:								
MQP-45-D	3,405 / 7,491	1,580 / 3,476	130 / 286,000	990 / 39	960 / 37.8	515 / 20.3	100 / 3.9	2,355 / 92.7
MQP-60-D	4,495 / 9,889	2,055 / 4,521	150 / 330,000	1,175 / 46.3	1,090 / 42.9	550 / 21.7	100 / 3.9	2,620 / 103.1
Pulveriser jaws:								
MQP-45-P	3,450 / 7,590	1,625 / 3,575	130 / 286,000	980 / 38.6	945 / 37.2	515 / 20.3	400 / 15.7	2,355 / 92.7
MQP-60-P	4,565 / 10,043	2,125 / 4,675	150 / 330,000	1,150 / 45.3	1,090 / 42.9	550 / 21.7	450 / 17.7	2,620 / 103.1
Steel jaws:								
MQP-45-S	3,130 / 6,886	1,305 / 2,871	415 / 913,000	465 / 18.3	700 / 27.6	375 / 14.8	120 / 4.7	2,105 / 82.9
MQP-60-S	4,315 / 9,493	1,875 / 4,125	465 / 1,023,000	540 / 21.3	750 / 29.5	410 / 16.1	120 / 4.7	2,335 / 91.9
Tank jaws:								
MQP-45-T	3,320 / 7,304	1,495 / 3,289	460 / 1,012,000	390 / 15.4	630 / 24.8	305 / 12.0	120 / 4.7	2,275 / 89.6
MQP-60-T	4,460 / 9,812	2,020 / 4,444	655 / 1,441,000	400 / 15.7	660 / 26.0	355 / 14.0	150 / 5.9	2,415 / 95.1
Universal jaws:								
MQP-45-U	3,195 / 7,029	1,370 / 3,014	145 / 319,000	670 / 26.4	830 / 32.7	525 / 20.7	310 / 12.2	2,225 / 87.6
MQP-60-U	4,425 / 9,735	1,985 / 4,367	180 / 396,000	820 / 32.3	880 / 34.6	590 / 23.2	340 / 13.4	2,470 / 97.2

* closing force for C-, D-, P-, U- and W-jaw measured at front tooth, for S- and T-jaw measured at mid point of inner blade

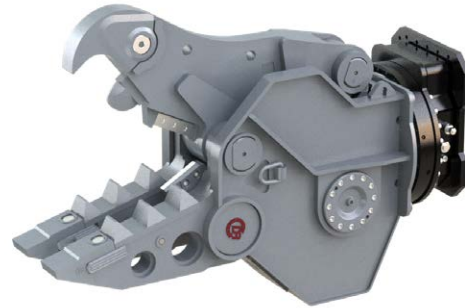
Rotating Shears up to 50t / 110,000lbs

DLC / DLD / DLP

The rotating demolition tools of the Dedicated Demolition Line have been developed for primary and secondary demolition. Their jaws are designed for each application area within a demolition job site:

Combi Shear DLC, Demolition Shear DLD or Pulveriser DLP.

- ▷ **Powerful cylinder** with robust pin suspension.
- ▷ **Cylinder** in two chamber technique with **speed valve**.
- ▷ **Rotation with additional oil passage**.
- ▷ Twin rotation motors for **extra rotation power**.
- ▷ **Swing bearing double pivoted**.
- ▷ **Rotation circuit filters**.
- ▷ **Teeth, shrouds and cutting blades exchangeable**.
- ▷ **Excellent speed/ power to weight ratio**.
- ▷ **DLP: exchangeable ground tooth-plate**.



Rotating Combi Shears DLC

Type	Operating weight	Weight	Jaw opening A	Jaw depth E	Lower jaw width B	Upper jaw width C	Height D	Length blades	Closing force*
	(t/lbs)	(kg/lbs)	(mm/in)	(mm/in)	(mm/in)	(mm/in)	(mm/in)	(mm/in)	(t/lbs)
DLC-45	32 - 50 / 70,400 - 110,000	3,085 / 6,787	980 / 38.6	990 / 39	470 / 18.5	100 / 3.9	2,365 / 93.1	500 / 19.7	110/150 / 242,000/330,000

Rotating Demolition Shears DLD

Type	Operating weight	Weight	Jaw opening A	Jaw depth E	Lower jaw width B	Upper jaw width C	Height D	Length blades	Closing force*
	(t/ lbs)	(kg/ lbs)	(mm/in)	(mm/in)	(mm/in)	(mm/in)	(mm/in)	(mm/in)	(t/lbs)
DLD-45	32 - 50 / 70,400 - 110,000	3,110 / 6,842	990 / 39.0	945 / 37.2	470 / 18.5	100 / 3.9	2,360 / 92.9	200 / 7.9	110/160 / 242,000/352,000

Rotating Pulveriser DLP

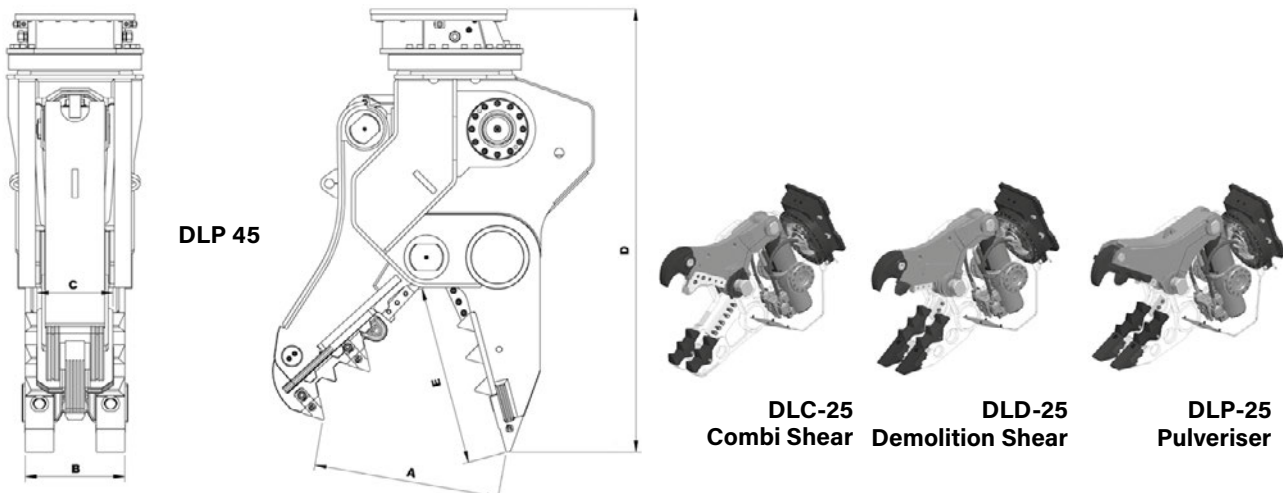
Type	Operating weight	Weight	Jaw opening A	Jaw depth E	Lower jaw width B	Upper jaw width C	Height D	Length blades	Closing force*
	(t/lbs)	(kg/lbs)	(mm/in)	(mm/in)	(mm/in)	(mm/in)	(mm/in)	(mm/in)	(t/lbs)
DLP-45	32 - 50 / 70,400 - 110,000	3,150 / 6,930	985 / 38.8	945 / 37.2	470 / 18.5	400 / 15.7	2,360 / 92.9	200 / 7.9	110/150 / 242,000/330,000

* closing force measured at front tooth / splitting tooth

Hydraulics

Type	Open / close		Rotation		Cycle times (open / close) (sec)
	Pressure max. (bar/psi)	Flow (l/min/GPM)	Pressure max. (bar/psi)	Flow (l/min/GPM)	
DLC-45 / DLD-45 / DLP-45	380 / 5,510	200 - max. 300 / 53 - max. 79.5	140 / 2,030	40 - max. 60 / 10.5 - max. 16	2.6 / 2.9

Technical drawings



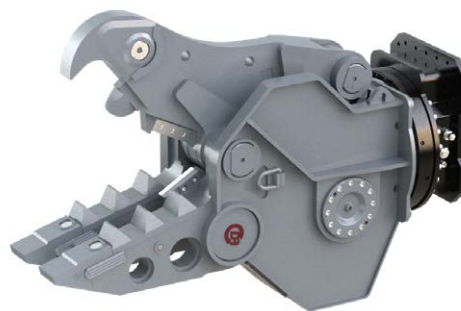
Request? exc@kinshofer.com

Rotating Shears with DemaPower

DRC / DRD / DRP

The rotating demolition tools of the Dedicated Demolition Line have been developed for primary and secondary demolition. The patented DemaPower cylinder concept provides up to 20% more power and obviously quicker cycle times. Their jaws are designed to each application area within a demolition job site: Combi Shear DRC, Demolition Shear DRD or Pulveriser DRP.

- ▷ Maximized working speed with the DemaPower cylinder and robust pin suspension, four chamber technique and speed valve.
- ▷ Rotation with additional oil passage.
- ▷ Twin rotation motors for extra rotation power.
- ▷ Swing bearing double pivoted.
- ▷ Rotation circuit filters.
- ▷ Teeth, shrouds and cutting blades exchangeable.
- ▷ Excellent speed/ power to weight ratio.
- ▷ DRP: exchangeable ground tooth-plate.



Rotating Combi Shears DLC

Type	Operating weight	Weight	Jaw opening A	Jaw depth E	Lower jaw width B	Upper jaw width C	Height D	Length blades	Closing force*
	(t/lbs)	(kg/lbs)	(mm/in)	(mm/in)	(mm/in)	(mm/in)	(mm/in)	(mm/in)	(t/lbs)
DRC-45	32 - 50 / 70,400 - 110,000	3,060 / 6,732	990 / 39.0	975 / 38.4	470 / 18.5	100 / 3.9	2,365 / 93.1	500 / 19.7	130/185 / 286,000/407,000

Rotating Demolition Shears DLD

Type	Operating weight	Weight	Jaw opening A	Jaw depth E	Lower jaw width B	Upper jaw width C	Height D	Length blades	Closing force*
	(t/lbs)	(kg/lbs)	(mm/in)	(mm/in)	(mm/in)	(mm/in)	(mm/in)	(mm/in)	(t/lbs)
DRD-45	32 - 50 / 70,400 - 110,000	3,085 / 6,787	990 / 39.0	945 / 37.2	470 / 18.5	100 / 3.9	2,360 / 92.9	200 / 27.9	130/195 / 286,000/429,000

Rotating Pulveriser DLP

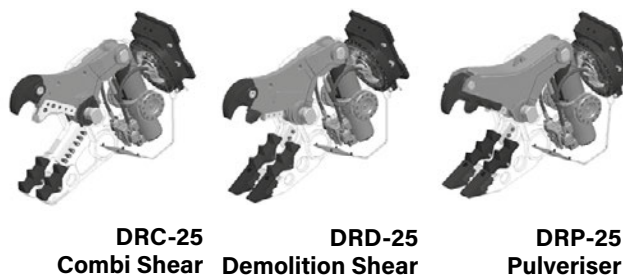
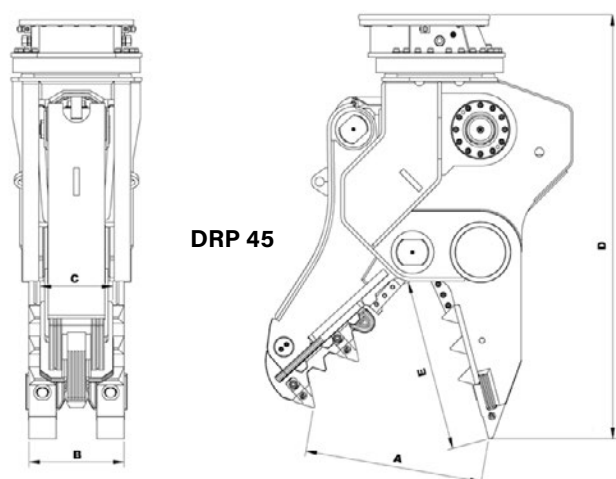
Type	Operating weight	Weight	Jaw opening A	Jaw depth E	Lower jaw width B	Upper jaw width C	Height D	Length blades	Closing force*
	(t/lbs)	(kg/lbs)	(mm/in)	(mm/in)	(mm/in)	(mm/in)	(mm/in)	(mm/in)	(t/lbs)
DRP-45	32 - 50 / 70,400 - 110,000	3,125 / 6,875	980 / 38.6	945 / 37.2	470 / 18.5	400 / 15.7	2,360 / 92.9	200 / 7.9	130/185 / 286,000/407,000
DRP-60	45 - 65 / 99,000 - 143,000	4,100 / 9,020	1,150 / 45.3	1,020 / 40.2	565 / 22.2	450 / 17.7	2,550 / 100.4	250 / 9.8	150/205 / 330,000/451,000

* closing force measured at front tooth / splitting tooth

Hydraulics

Type	Open / close		Rotation		Cycle times (open / close) (sec)
	Pressure max. (bar / psi)	Flow (l/min / GPM)	Pressure max. (bar / psi)	Flow (l/min / GPM)	
DRC-45/DRD-45/DRP-45	380 / 5,510	200 - max. 300 / 53 - max. 79.5	140 / 2,030	40 - max. 60 / 10.5 - max. 16	2.0 / 2.9
DRP-60	380 / 5,510	300 - max. 400 / 79.5 - max. 105	140 / 2,030	40 - max. 60 / 10.5 - max. 16	2.0 / 2.8

Technical drawings



Mobile Scrap Shear with 360° rotation up to 90t / 198,000lbs

DXS

The Kinshofer DXS Mobile Shear with its 360° rotation has been engineered to achieve an optimal power to weight ratio. This robust tool can be used for a wide variety of jobs including steel structural demolition, scrap yards, conditioning of industrial mixed scrap and even processing steel-reinforced concrete.

Also available as C-version without rotation.

- ▷ **25% more power and fast cycle times** thanks to DemaPower 2.0.
- ▷ **Protected cylinder, robust shear arm.**
- ▷ **Heavy duty bearings** for reduced bushing wear – without allowance.
- ▷ Very high cutting force: **optimal power to weight ratio.** Robust mouth.
- ▷ Optimal mouth design with **large opening for scrap.**
- ▷ **More cutting force** by displaced angles of the two cutting blades.
- ▷ **All wear cutting blades can be turned three times.**
- ▷ **Exchangeable, weldable piercing tip.**
- ▷ With **integrated OQ80/4 adapter (version FQC)** available.

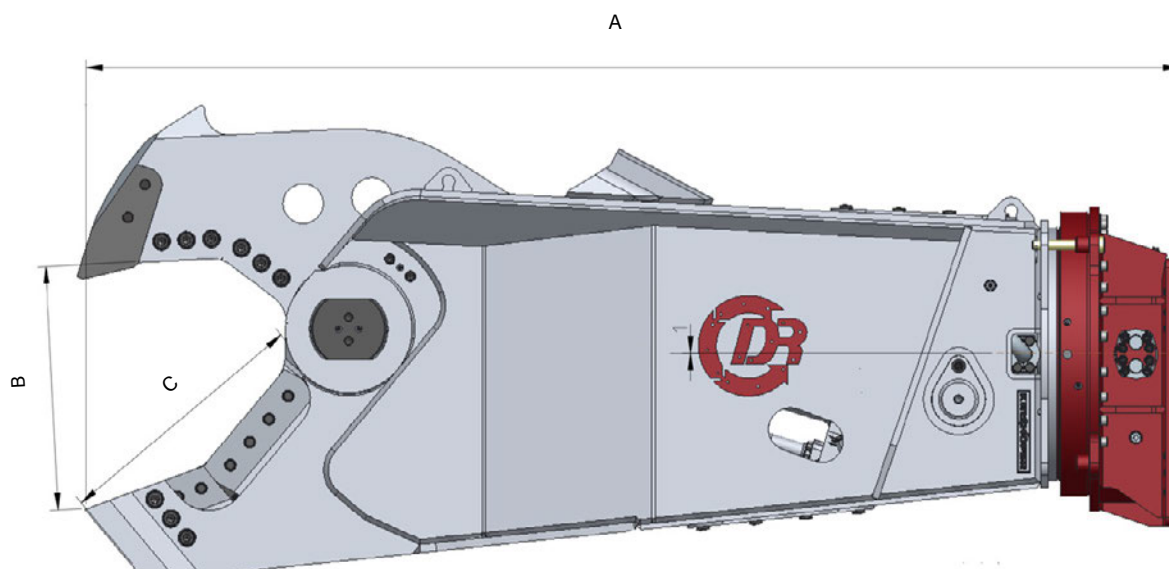


Mobile Scrap Shear DXS with 360° rotation

Type	Weight*	Total length A	Jaw opening B	Jaw depth C	Jaw width lower / upper	Cutting force**	Operating weight (boom)	Operating weight (dipper)
	(kg/lbs)	(mm/in)	(mm/in)	(mm/in)	(mm/in)	(kN/lbf)	(t/lbs)	(t/lbs)
DXS-50-A	4,500 / 9,900	3,280 / 129.1	730 / 28.7	780 / 30.7	450/150 / 17.7/5.9	10,000 / 2,200,000	25 - 35 / 55,000 - 77,000	35 - 50 / 77,000 - 110,000
DXS-50-FQC	4,630 / 10,186	3,650 / 143.7	730 / 28.7	780 / 30.7	450/150 / 17.7/5.9	10,000 / 2,200,000	25 - 35 / 55,000 - 77,000	35 - 50 / 77,000 - 110,000
DXS-60-A	5,800 / 12,760	3,520 / 138.6	820 / 32.3	835 / 32.9	490/150 / 19.3/5.9	11,500 / 2,530,000	32 - 50 / 70,400 - 110,000	50 - 70 / 110,000 - 154,000
DXS-60-C***	-	-	820 / 32.3	835 / 32.9	490/150 / 19.3/5.9	11,500 / 2,530,000	30 - 50 / 66,000 - 110,000	-
DXS-70-A	6,750 / 14,850	3,835 / 151.0	900 / 35.4	895 / 35.2	510/150 / 20.1/5.9	12,200 / 2,684,000	35 - 65 / 77,000 - 143,000	60 - 80 / 132,000 - 176,000
DXS-70-C***	-	-	900 / 35.4	895 / 35.2	510/150 / 20.1/5.9	12,200 / 2,684,000	32 - 65 / 70,400 - 143,000	-
DXS-80-A	7,800 / 17,160	3,950 / 155.5	980 / 38.6	1,015 / 40.0	-	14,000 / 3,080,000	40 - 75 / 88,000 - 165,000	70 - 90 / 154,000 - 198,000
DXS-80-C***	-	-	980 / 38.6	1,015 / 40.0	-	14,000 / 3,080,000	37 - 75 / 81,400 - 165,000	-
DXS-90-A	9,000 / 19,800	4,310 / 169.7	1,060 / 41.7	1,080 / 42.5	-	15,300 / 3,366,000	50 - 90 / 110,000 - 198,000	80 - 100 / 176,000 - 220,000
DXS-90-C***	-	-	1,060 / 41.7	1,080 / 42.5	-	-	47 - 90 / 103,400 - 198,000	-

* excl. adapter ** cutting force calculated at arm *** without rotation

Technical drawings



Mobile Scrap Shear - hydraulics and performance

DXS

Hydraulics

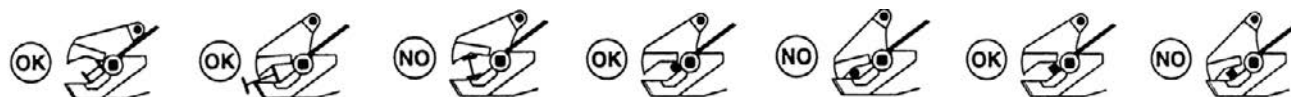
Type	Open / close		Rotation		Back pressure (bar/psi)	Cycle times open/close (sec)
	Pressure max. (bar/psi)	Flow (l/min/GPM)	Pressure max. (bar/psi)	Flow (l/min/GPM)		
DXS-50	380 / 5,510	300 - max. 400 / 79.5 - max. 105	140 / 2,030	60 / 16	-	2.8 / 3.7
DXS-60	380 / 5,510	400 - max. 500 / 105 - max. 132	200 / 2,880	60 / 16	10 / 144 (drain line required)	3.0 / 3.8
DXS-70	380 / 5,510	500 - max. 600 / 132 - max. 158	200 / 2,880	60 / 16	10 / 144 (drain line required)	3.0 / 3.8
DXS-80	380 / 5,510	600 - max. 700 / 158 - max. 185	200 / 2,880	60 / 16	10 / 144 (drain line required)	4.5 / 3.6
DXS-90	380 / 5,510	700 - max. 800 / 185 - max. 211	200 / 2,880	60 / 16	10 / 144 (drain line required)	4.6 / 3.8

Performance data

Type	DXS-50	DXS-60	DXS-70	DXS-80	DXS-90
H-beam narrow/medium/wide	HEA 500 / HEB 360 / HEM 160	HEA 600 / HEB 400 / HEM 180	HEA 700 / HEB 450 / HEM 200	HEA 800 / HEB 500 / HEM 220	HEA 900 / HEB 600 / HEM 240
I-beam narrow/medium	IPE 600 / INP 500	IPE 700 / INP 550	IPE 750 / INP 550	IPE 800 / INP 600	IPE 900 / INP 700
L-angles (mm/in)	300 x 300 x 25 / 11.8 x 11.8 x 0.98	300 x 300 x 30 / 11.8 x 11.8 x 1.18	300 x 300 x 35 / 11.8 x 11.8 x 1.38	350 x 350 x 35 / 13.8 x 13.8 x 1.38	400 x 400 x 35 / 15.7 x 15.7 x 1.38
Solid round (mm/in)	95 / 3.7	100 / 3.9	105 / 4.1	115 / 4.5	125 / 4.9
Solid square (mm/in)	85 / 3.3	90 / 3.5	95 / 3.7	100 / 3.9	110 / 4.3
Piercing plate (mm/in)	25 / 0.98	30 / 1.18	35 / 1.38	35 / 1.38	35 / 1.38
Pipe x wall (mm/in)	457 x 9.5 / 17.9 x 0.37	559 x 9.5 / 22 x 0.37	609 x 9.5 / 24 x 0.37	711 x 9.5 / 28 x 0.37	762 x 9.5 / 30 x 0.37

Dimensions: standardized wide flange beams (HEA, HEB, HEM) and section steel (IPE, INP) according to DIN EN 10 034 or cross section / sheet thickness in mm/in

Note: The capability to cut the above profiles assumes the tensile strength of the steel 370 N/mm² as well as the shear operating pressure of 350 bar / 5040 psi. In borderline cases, we recommend an actual test cut is made to determine whether the profile in question can be cut. Larger beams can be often cut in two steps.



Static Pulverisers up to 65t / 143,000lbs

DSP

Designed for secondary demolition, our Static Pulverisers (standard or Extreme version) can both break up reinforced concrete structures and separate the steel. Up to 20% additional power and fast cycle times are achieved using the patented DemaPower cylinder concept for the Extreme version.

- ▷ DemaPower achieves optimal speed and power (Extreme version).
- ▷ All teeth and scrapers are exchangeable.
- ▷ Exchangeable ground tooth plate and shrouds.
- ▷ Bearing points are engineered for optimum load handling and reduced wear.
- ▷ Integrated dual action speed valve.
- ▷ Optional: exchangeable cutting blades.
- ▷ Wear parts are exchangeable on site.



Pulverisers DSP / DSP-Extreme

Type	Operating weight (t/lbs)	Weight (kg/lbs)	Closing force* (t/lbs)
DSP-45	30 - 50 / 66,000 - 110,000	2,670 / 5,874	110 / 242,000
DSP-45-Extreme	30 - 50 / 66,000 - 110,000	2,645 / 5,819	130 / 286,000
DSP-60-Extreme	42 - 65 / 92,400 - 143,000	3,525 / 7,755	150 / 330,000

*closing force calculated at front tooth

Dimensions

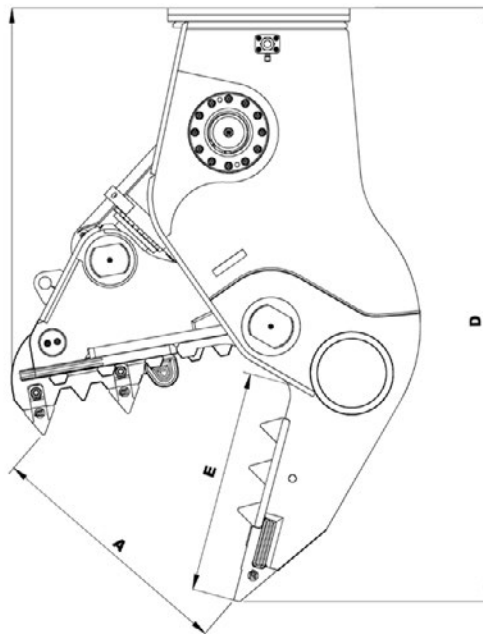
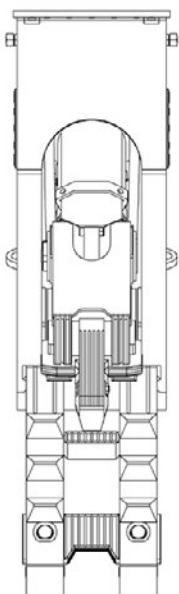
Type	Jaw opening A (mm/in)	Lower jaw width (mm/in)	Upper jaw width (mm/in)	Height D (mm/in)	jaw depth E (mm/in)	Cutting blades length** (mm/in)
DSP-45	1,015 / 40	525 / 20.7	400 / 15.7	2,360 / 92.9	900 / 35.4	200 / 7.9
DSP-45-Extreme	1,015 / 40	525 / 20.7	400 / 15.7	2,360 / 92.9	900 / 35.4	200 / 7.9
DSP-60-Extreme	1,135 / 44.7	565 / 22.2	450 / 17.7	2,635 / 103.7	1,000 / 39.4	250 / 9.8

** cutting blades optional, not in standard package

Hydraulics

Type	Pressure max. (bar/psi)	Open / close Flow (l/min/GPM)	Cycle times (open/close) (sec)
DSP-45	380 / 5,510	200 - max. 300 / 53.0 - 79.5	2.6 / 2.9
DSP-45-Extreme	380 / 5,510	200 - max. 300 / 53.0 - 79.5	2.0 / 2.9
DSP-60-Extreme	380 / 5,510	300 - max. 400 / 79.5 - 105.0	2.0 / 2.8

Technical drawing



DSP-Extreme

Rotating Pulverisers up to 65t / 143,000lbs

DSP-R

Designed for secondary demolition, our Rotating Pulverisers (standard or Extreme version) can both break up reinforced concrete structures and separate the steel. Up to 20% additional power and fast cycle times are achieved using the patented DemaPower cylinder concept for the Extreme version. Including a 360° rotation.

- ▷ DemaPower achieves optimal speed and power (Extreme version).
- ▷ All teeth and scrapers are exchangeable.
- ▷ Exchangeable ground tooth plate and shrouds.
- ▷ Bearing points are engineered for optimum load handling and reduced wear.
- ▷ Integrated dual action speed valve.
- ▷ Optional: exchangeable cutting blades.
- ▷ Wear parts are exchangeable on site.
- ▷ 360° rotation included.



Pulverisers DSP-R / DSP-R-Extreme

Type	Operating weight (t/ lbs)	Weight (kg/lbs)	Closing force* (t/lbs)
DSP-45-R	30 - 50 / 66,000 - 110,000	3,045 / 6,699	110 / 242,000
DSP-45-R-Extreme	30 - 50 / 66,000 - 110,000	3,020 / 6,644	130 / 286,000
DSP-60-R-Extreme	42 - 65 / 92,400 - 143,000	4,075 / 8,965	150 / 330,000

*closing force calculated at front tooth

Dimensions

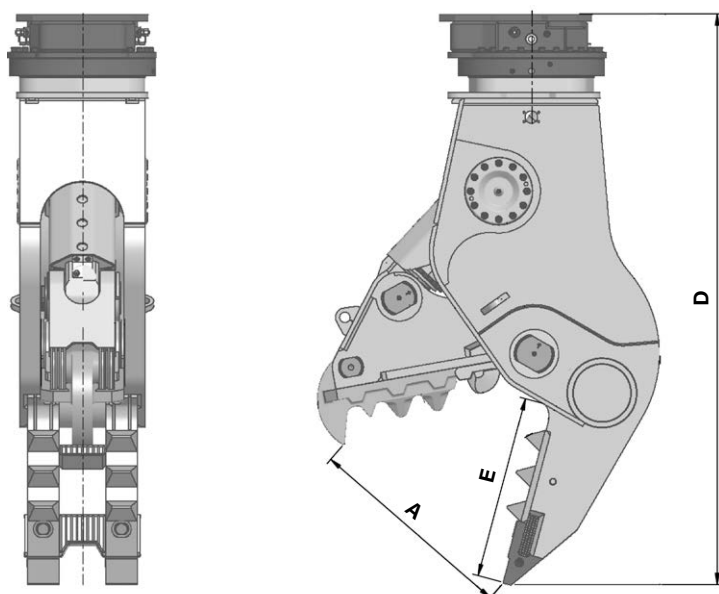
Type	Jaw opening A (mm/in)	Lower jaw width (mm/in)	Upper jaw width (mm/in)	Height D (mm/in)	jaw depth E (mm/in)	Cutting blades length** (mm/in)
DSP-45-R	1,015 / 40.4	525 / 20.7	400 / 15.7	2,730 / 107.5	900 / 35.4	200 / 7.9
DSP-45-R-Extreme	1,015 / 40.4	525 / 20.7	400 / 15.7	2,730 / 107.5	900 / 35.4	200 / 7.9
DSP-60-R-Extreme	1,135 / 44.7	565 / 22.2	450 / 17.7	3,005 / 118.3	1,000 / 39.4	250 / 9.8

** cutting blades optional, not in standard package

Hydraulics

Type	Pressure max. (bar/psi)	Open / close		Rotate		Cycle times (open/close) (sec)
		Flow (l/min/GPM)		Pressure max. (bar/psi)	Flow (l/min/GPM)	
DSP-45-R	380 / 5,510	200 - max. 300 / 53.0 - max. 79.5		140 / 2,030	60 / 16.0	2.6 / 2.9
DSP-45-R-Extreme	380 / 5,510	200 - max. 300 / 53.0 - max. 79.5		140 / 2,030	60 / 16.0	2.0 / 2.9
DSP-60-R-Extreme	380 / 5,510	300 - max. 400 / 79.5 - max. 105.0		140 / 2,030	60 / 16.0	2.0 / 2.8

Technical drawing



DSP-R

Concrete Crushers 35-80t / 77,000-176,000lbs

DCC

The DCC 2-cylinder concrete crushers have been especially developed for demolishing the thickest reinforced concrete, such as viaducts, quaysides and heavy foundations. The DCC concrete crusher works perfectly in combination with the latest model excavators as well as specialized „High Reach Demolition Machines“.

- ▷ **25% more power and extremely fast cycle times** because of DemaPower 2.0 System.
- ▷ Double rotator motors or single piston motor ensure a **high rotation force**.
- ▷ **Filters in rotator** protect the rotation circuit. High penetrating force for cutting.
- ▷ **Robust slewing ring** ensures it will survive even the heaviest demolition work.
- ▷ **Highly durable jaws. Optimum cylinder protection.**
- ▷ **Hydraulic system completely protected** by the yoke.
- ▷ Patented safety system to prevent overpressurisation of hydraulic cylinder rod side.
- ▷ **3 Versions: A, C and D** (see drawing below).



Request? exc@kinshofer.com

Concrete Crushers DCC

Type	Operating weight* (t/lbs)	Weight** (approx.) (kg/lbs)	Jaw opening (mm/in)	Length (mm/in)	Closing force at point 1 (approx.) (t/lbs)
DCC-50-A	35 - 55 / 77,000 - 121,000	4,200 / 9,240	1,500 / 59.1	2,845 / 112.0	155 / 341,000
DCC-50-C	35 - 55 / 77,000 - 121,000	4,320 / 9,504	1,500 / 59.1	2,845 / 112.0	155 / 341,000
DCC-50-D	35 - 55 / 77,000 - 121,000	4,200 / 9,240	1,490 / 58.7	2,845 / 112.0	155 / 341,000
DCC-65-A	50 - 70 / 110,000 - 154,000	5,300 / 11,660	1,600 / 63.0	2,995 / 117.9	180 / 396,000
DCC-65-C	50 - 70 / 110,000 - 154,000	5,440 / 11,968	1,600 / 63.0	2,995 / 117.9	180 / 396,000
DCC-65-D	50 - 70 / 110,000 - 154,000	5,300 / 11,660	1,565 / 61.6	2,995 / 117.9	180 / 396,000
DCC-75-A	60 - 80 / 132,000 - 176,000	6,300 / 13,860	1,750 / 68.9	3,225 / 127.0	200 / 440,000
DCC-75-C	60 - 80 / 132,000 - 176,000	6,300 / 13,860	1,700 / 66.9	3,225 / 127.0	200 / 440,000
DCC-75-D	60 - 80 / 132,000 - 176,000	6,300 / 13,860	1,710 / 67.3	3,225 / 127.0	200 / 440,000

* calculated weight **without adapter

Hydraulics

Type	Open / close		Rotation		Back pressure max. (bar/psi)	Cycle times (sec)
	Pmax (bar/psi)	Flow (l/min/GPM)	Pmax (bar/psi)	Flow (l/min/GPM)		
DCC-50	380 / 5,510	300 - 500 / 79.5 - 132.0	140 / 2,030	40 - 60 / 10.5 - 16.0	-	3.2 / 3.4
DCC-65	380 / 5,510	400 - 600 / 105 - 158.5	140 / 2,030	40 - 60 / 10.5 - 16.0	-	2.8 / 3.9
DCC-75	380 / 5,510	500 - 700 / 132.0 - 185.0	200 / 2,900	60 / 16.0	10 / 144 (drain line required)	2.8 / 3.8

***drain line required

Technical drawing



DCC-A
Standard



DCC-C
with exchangeable tips, shrouds
and long cutting blades



DCC-D
with exchangeable wear parts
and standard cutting blades

Earth Drills 20-45t / 44,000-99,000lbs 35000MAX / 42000MAX / 65000MAX

The robust earth drills for excavators from 20t / 44,000lbs to 45t / 99,000lbs operating weight is an economical and customized solution for drilling holes for e.g. fencing, road signage, landscaping and tree planting. Well borings, screw pile installations and sound barrier installations are also no problem for the earth drills.

- ▷ **Non Dislodgement Shaft (NDS)** for more safety and lower down times, as this unique construction prevents the output shaft from dislodgement.
- ▷ **Pre-filled with a colored gear oil.** Not only is the use of a colored oil a good indicator of correct service, but it also aids identifying possible hydraulic oil leaks.
- ▷ The heavy duty fabricated hoods feature **forged steel ears**; these high strength ears easily transmit the high torsional loads, experienced whilst drilling, without becoming fatigued.
- ▷ **Easy access oil service points.**
- ▷ Optional for screw pile installation: **Alignment monitor** for vertical adjustment.



Request? exc@kinshofer.com

Earth Drills 35000MAX / 42000MAX / 65000MAX

Type	Operating weight (t/lbs)	Shaft (mm/in)	Rotations (RPM)	Height (mm/in)	Diameter (mm/in)	Weight (kg/lbs)	Matching augers
35000MAX	20 - 45 / 44,000 - 99000	110 / 4.3 square	11 - 31	1,411 / 55.6	406 / 16	442 / 972	PA 300 - 1500
42000MAX	20 - 45 / 44,000 - 99000	110 / 4.3 square	9 - 26	1,411 / 55.6	406 / 16	442 / 972	PA 300 - 1800
65000MAX	21 - 45 / 46200 - 99,000	110 / 4.3 square	8 - 21	1,556 / 61.3	406 / 16	480 / 1,056	PA 300 - 2400

Package consists of: earth drill

Accessories

Type	Description
PA Ext 2000	extension for earth drills 35000MAX to 65000MAX and PA augers – 2,000mm / 78.7in length
PA Ext 3000	extension for earth drills 35000MAX to 65000MAX and PA augers – 3,000mm / 118.1in length
PA TeleExt 2000	telescopic extension for PA augers – 2,000mm / 78.7in length
PA TeleExt 3000	telescopic extension for PA augers – 3,000mm / 118.1in length
single pin hitch	for earth drills 35000MAX to 65000MAX
adapter plate	for earth drills 35000MAX to 65000MAX
cradle hitch	for earth drills 35000MAX to 65000MAX

Technical data

	35000MAX	42000MAX	65000MAX
Hydraulic pressure:	180 - 310bar / 2,610 - 4,500 psi	180 - 310bar / 2,610 - 4,500 psi	160 - 320bar / 2,320 - 4,640 psi
Oil flow:	80 - 225 l/min / 21 - 59.5 GPM	80 - 225 l/min / 21 - 59.5 GPM	100 - 280 l/min / 26.5 - 74 GPM
Torque range:	20,510 - 35,323 Nm / 15,126.1 - 26,050.7 ft.lbs.	24,612 - 42,387 Nm / 18,151.4 - 31,260.4 ft.lbs.	33,295 - 66,589 Nm / 24,555.1 - 49,109.4 ft.lbs

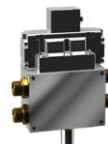
Pictures



single pin hitch



adapter plate



bi-directional valve



cradle hitch



pressure relief valve



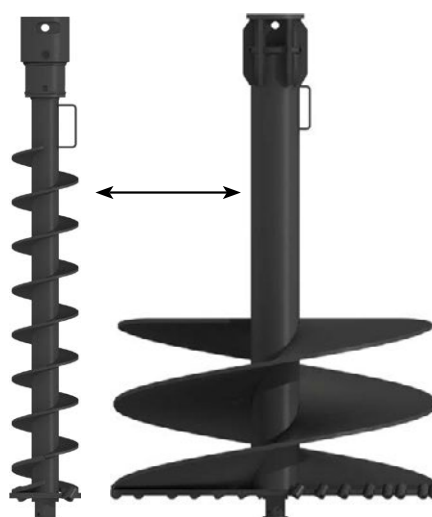
extension
telescopic extension

Heavy Duty Augers

PA

The PA auger is perfectly matched to the corresponding earth drills and every task. A constant spiral configuration and a shallow pitch flight guarantee extreme efficiency and productivity.

- ▷ **Higher productivity** by constant spiral configuration and the perfectly angled tooth holder.
- ▷ **Interchangeable pilots and teeth** allow for differing ground conditions.
- ▷ **Easy fitting of teeth and pilots.**
- ▷ **Patented Shock Lock-System:** incorporating a shock absorbing rubber element to protect the tungsten carbide on the tooth assembly coupled with a solid locking pin to prevent tooth loss.
- ▷ **High flexibility** thanks to different auger extensions and telescopic extensions.
- ▷ Available in two lengths: 2,380mm / 93.7in or 3,380mm / 133.1in.



PA Augers 2380 mm (specify choice of pilot and teeth when ordering)

Type	Diameter (mm/in)	Spiral length (mm/in)	Total length (mm/in)	Connection (mm/in)	Weight (kg/lbs)	Number of teeth	Tooth type
PA-300-2380 Earth	300 / 11.8	1,558 / 61.3	2,380 / 93.7	110 / 4.3 square	165 / 363	3	Earth
PA-300-2380 Rock					165 / 363	3	Rock
PA-350-2380 Earth	350 / 13.8	1,527 / 60.1	2,380 / 93.7	110 / 4.3 square	177 / 389	3	Earth
PA-350-2380 Rock					177 / 389	3	Rock
PA-400-2380 Earth	400 / 15.7	1,446 / 56.9	2,380 / 93.7	110 / 4.3 square	190 / 418	4	Earth
PA-400-2380 Rock					190 / 418	4	Rock
PA-450-2380 Earth	450 / 17.7	1,446 / 56.9	2,380 / 93.7	110 / 4.3 square	211 / 464	4	Earth
PA-450-2380 Rock					211 / 464	4	Rock
PA-500-2380 Earth	500 / 19.7	1,446 / 56.9	2,380 / 93.7	110 / 4.3 square	235 / 517	5	Earth
PA-500-2380 Rock					235 / 517	5	Rock
PA-600-2380 Earth	600 / 23.6	1,433 / 56.4	2,380 / 93.7	110 / 4.3 square	167 / 367	6	Earth
PA-600-2380 Rock					167 / 367	6	Rock
PA-750-2380 Earth	750 / 29.5	1,321 / 52.0	2,380 / 93.7	110 / 4.3 square	318 / 399	7	Earth
PA-750-2380 Rock					318 / 399	7	Rock
PA-800-2380 Earth	800 / 31.5	1,321 / 52.0	2,380 / 93.7	110 / 4.3 square	344 / 756	8	Earth
PA-800-2380 Rock					344 / 756	8	Rock
PA-900-2380 Earth	900 / 35.4	1,321 / 52.0	2,380 / 93.7	110 / 4.3 square	412 / 906	10	Earth
PA-900-2380 Rock					412 / 906	10	Rock
PA-1000-2380 Earth	1,000 / 39.4	971 / 38.2	2,380 / 93.7	110 / 4.3 square	140 / 308	10	Earth
PA-1000-2380 Rock					140 / 308	10	Rock
PA-1200-2380 Earth	1,200 / 47.2	908 / 35.7	2,380 / 93.7	110 / 4.3 square	522 / 1,148	12	Earth
PA-1200-2380 Rock					522 / 1,148	12	Rock
PA-1500-2380-Earth	1,500 / 59.1	750 / 29.5	2,380 / 93.7	110 / 4.3 square	735 / 1,617	15	Erde
PA-1500-2380-Rock					735 / 1,617	15	Fels

PA Augers 3380 mm (specify choice of pilot and teeth when ordering)

Type	Diameter (mm/ in)	Spiral length (mm/ in)	Total length (mm/ in)	Connection (mm/in)	Tooth type
PA-300-3380 Earth	300 / 11.8	1,558 / 61.3	3,380 / 133.1	110 / 4.3 square	Earth
PA-300-3380 Rock					Rock
PA-350-3380 Earth	350 / 13.8	1,527 / 60.1	3,380 / 133.1	110 / 4.3 square	Earth
PA-350-3380 Rock					Rock
PA-400-3380 Earth	400 / 15.7	1,446 / 56.9	3,380 / 133.1	110 / 4.3 square	Earth
PA-400-3380 Rock					Rock
PA-450-3380 Earth	450 / 17.7	1,446 / 56.9	3,380 / 133.1	110 / 4.3 square	Earth
PA-450-3380 Rock					Rock
PA-500-3380 Earth	500 / 19.7	1,446 / 56.9	3,380 / 133.1	110 / 4.3 square	Earth
PA-500-3380 Rock					Rock
PA-600-3380 Earth	600 / 23.6	1,433 / 56.4	3,380 / 133.1	110 / 4.3 square	Earth
PA-600-3380 Rock					Rock
PA-750-3380 Earth	750 / 29.5	1,321 / 52	3,380 / 133.1	110 / 4.3 square	Earth
PA-750-3380 Rock					Rock
PA-800-3380 Earth	800 / 31.5	1,321 / 52	3,380 / 133.1	110 / 4.3 square	Earth
PA-800-3380 Rock					Rock
PA-900-3380 Earth	900 / 35.4	1,321 / 52	3,380 / 133.1	110 / 4.3 square	Earth
PA-900-3380 Rock					Rock
PA-1000-3380 Earth	1,000 / 39.4	971 / 38.2	3,380 / 133.1	110 / 4.3 square	Earth
PA-1000-3380 Rock					Rock
PA-1200-3380 Earth	1,200 / 47.2	908 / 35.7	3,380 / 133.1	110 / 4.3 square	Earth
PA-1200-3380 Rock					Rock

Request? exc@kinshofer.com

Torque Heads 21-50t / 46,200-110,000lbs

100000MAX / 150000MAX

The Heavy Duty drives are specifically designed for foundation screw pile installations and available for excavators with 21t/46,200lbs up to 50t/110,000lbs operating weight. The screw pile drives are manufactured according to the highest quality standards in terms of technology and materials, providing the end user with the highest level of reliability.

- ▷ **Non Dislodgement Shaft (NDS)** for more safety and lower down times, as this unique construction prevents the output shaft from dislodgement.
- ▷ **Pre-filled with a colored gear oil.** Not only is the use of a colored oil a good indicator of correct service, but it also aids identifying possible hydraulic oil leaks.
- ▷ The heavy duty fabricated hoods feature **forged steel ears**; these high strength ears easily transmit the high torsional loads, experienced whilst drilling, without becoming fatigued.
- ▷ **Easy access oil service points.**
- ▷ Optional for screw pile installation: **Alignment monitor** for vertical adjustment.



150000MAX

Request? exc@kinshofer.com

Torque Heads 100000MAX / 150000MAX

Type	Operating weight (t/lbs)	Shaft	Rotations (RPM)	Height (mm/in)	Diameter (mm/in)	Weight (kg/lbs)
100000MAX	21 - 50 / 46,200 - 110,000	150 mm hex/ 5.9 in	5 - 15	1,625 / 63.9	635 / 25	1,060 / 2,335
150000MAX	21 - 50 / 46,200 - 110,000	150 mm hex/ 5.9 in	4 - 12	1,865 / 73.4	765 / 30	1,490 / 3,278

Package consists of: torque heads

Accessories

Type	Description
double pin hitch	for torque heads
cradle hitch	for torque heads

Technical data

	100000MAX	150000MAX
Hydraulic pressure:	160 - 350 bar / 2,321 - 5,076 psi	160 - 340 bar / 2,321 - 4,931 psi
Oil flow:	100 - 280 l/min / 26.4 - 74 GPM	100 - 340 l/min / 26.4 - 89.8 GPM
Torque range:	45,746 - 100,069 Nm / 33,741 - 73,807 ft.lbs.	71,680 - 152,319 Nm / 52,868 - 112,344 ft.lbs.

Pictures



cradle hitch



In-Site Monitor

In-Site Monitor

The In-Site range of products are the must have tool to enable you to perform with the required accuracy, precision and efficiency across all your torque applications. With three variants, In-Site is perfect for operators in all environments to get the best possible performance from their drive units.

Data can be viewed in real-time, allowing immediate adjustments as required to help keep jobsites as problem free as possible. Data can also be viewed offline in an easy to use dashboard format to give that enhanced level of understanding.



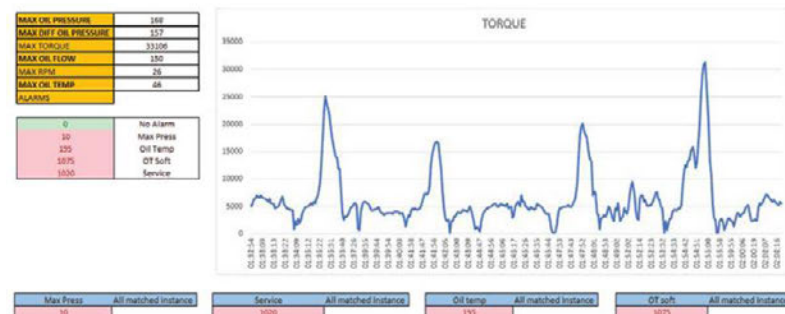
- ▷ Plug-and-Play
- ▷ Real time data analysis
- ▷ Wireless touch screen display
- ▷ Alignment monitor
- ▷ Pressure readouts
- ▷ Calculated torque value
- ▷ Internal oil temperature records
- ▷ Time and date stamp of data
- ▷ Unit switch from metric to imperial
- ▷ Servicing alarm
- ▷ Temperature alarm
- ▷ Total run time



In-Site Monitor

Type	Alignment sensor	Pressure sensor	Flow sensor (mm)	Temperature sensor (mm)	Earth drill compatibility	Operating weight (t/lbs)
In-Site Align	✓	-	-	-	from X1500	> 1 / 2,200
In-Site Data	✓	✓	-	-	from X1500	> 1 / 2,200
In-Site Data Plus	✓	✓	500 x 325 / 19.7 x 12.8	320 x 310 / 12.6 x 12.2	from 20000MAX	> 13 / 28,600

Example



Mounting options for Earth Drills

Single pin hitches



Type	With pin Ø (mm/in)	For earth drills
KM 501-35000MAX-65000MAX-60	60 / 2.36	35000MAX to 65000MAX
KM 501-35000MAX-65000MAX-65	65 / 2.56	35000MAX to 65000MAX
KM 501-35000MAX-65000MAX-70	70 / 2.76	35000MAX to 65000MAX
KM 501-35000MAX-65000MAX-75	75 / 2.95	35000MAX to 65000MAX
KM 501-35000MAX-65000MAX-80	80 / 3.15	35000MAX to 65000MAX
KM 501-35000MAX-65000MAX-90	90 / 3.54	35000MAX to 65000MAX
KM 501-35000MAX-65000MAX-100	100 / 3.94	35000MAX to 65000MAX
KM 501-35000MAX-65000MAX-110	110 / 4.33	35000MAX to 65000MAX

Adapters for system L-Lock



Type	For earth drills	Adapter	Operating weight (t/lbs)
KSW21-35000MAX	35000MAX	KSW21/25	20 - 45 / 44,000 - 99,000
KSW21-42000MAX	42000MAX	KSW21/25	20 - 45 / 44,000 - 99,000
KSW21-65000MAX	65000MAX	KSW21/25	21 - 45 / 46,200 - 99,000

Request? exc@kinshofer.com

Hydraulic Breakers up to 200t / 440,000lbs

KFX

The KFX breaker-series has two adjusting valves as standard. Firstly, a control valve on the cylinder of the hammer allows the operator to adjust the number of blows generated. A second valve allows the adjustment of the working pressure from 160bar / 2320psi to 200bar / 2900psi. Working in tunnels, and even underwater, is also possible by adding air tubes.

- ▷ **Regulation of the operating pressure:** KFX-breakers (KFX 20 to KFX 200), regulating the working pressure from 160bar / 2,320psi to 200bar / 2,900psi can be managed manually by valve adjustment.
- ▷ **Blows adjustment:** For KFX-breakers (KFX 20 to KFX 200), regulating the blow rate can be managed manually by adjusting a valve located on the side of the breaker.
- ▷ **Hydraulic system for blank firing:** a regenerative oil circuit that avoids blank firing when the tool is not in contact with the rock.



Request? exc@kinshofer.com

Technical data KFX

Type	Weight (kg/lbs)	Diameter tool (mm/in)	Energy (J)	Hits per minute (/min)	Height with standard tools (mm/in)	Operating weight (t/lbs)
KFX 47	3,700 / 8,140	180 / 7.1	9,500	300 - 650	3,040 / 119.7	35 - 50 / 77,000 - 110,000
KFX 58	4,400 / 8,680	180 / 7.1	12,500	300 - 650	3,040 / 119.7	36 - 55 / 79,200 - 121,000
KFX 70	4,850 / 10,670	195 / 7.7	16,500	250 - 550	3,090 / 121.7	40 - 65 / 88,000 - 143,000
KFX 80	5,800 / 12,760	195 / 7.7	18,500	250 - 550	3,010 / 118.5	45 - 75 / 99,000 - 165,000
KFX 120	7,800 / 17,160	215 / 8.5	23,000	200 - 400	2,560 / 108.8	60 - 110 / 132,000 - 242,000
KFX 150	12,000 / 26,400	255 / 10.0	28,000	150 - 300	2,740 / 107.9	80 - 170 / 176,000 - 374,000
KFX 200	14,500 / 31,900	280 / 11.0	35,000	150 - 250	2,740 / 107.9	100 - 200 / 220,000 - 440,000

Package consists of: breaker, two standard tools at option (moil, blunt, pyramid, chisel) and nitrogen adapter

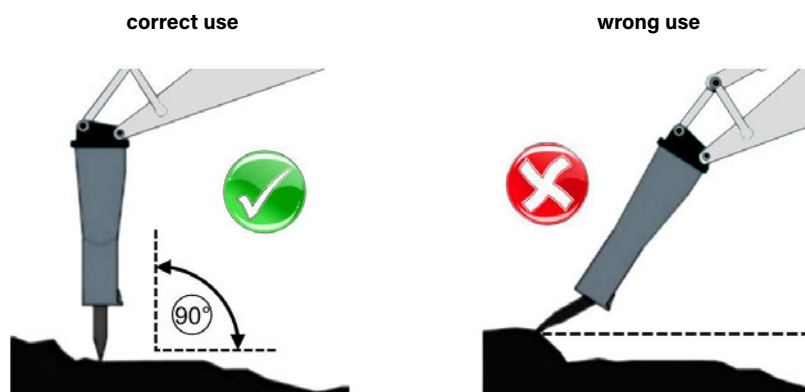
Hydraulics KFX

Type	Pump capacity (l/min/GPM)	Operating pressure (bar/psi)	Back pressure max. (bar/psi)	Inner diameter pressure line	Inner diameter tank line
KFX 47	250 - 300 / 66.0 - 79.5	180 / 2,610	25 / 362	1"1/4	1"1/4
KFX 58	270 - 320 / 71.0 - 84.5	190 / 2,750	25 / 362	1"1/4	1"1/4
KFX 70	290 - 350 / 76.5 - 92.5	190 / 2,750	30 / 434	1"1/4	1"1/4
KFX 80	300 - 380 / 79.5 - 100.5	190 / 2,750	30 / 434	1"1/4	1"1/4
KFX 120	380 - 440 / 100.5 - 116.0	190 / 2,750	30 / 434	1"1/4	1"1/4
KFX 150	480 - 570 / 126.8 - 150.5	190 / 2,750	30 / 434	1"1/2	1"1/2
KFX 200	500 - 600 / 132.0 - 158.5	190 / 2,750	30 / 434	1"1/2	1"1/2

Accessories

Type	Description
KFX-Auto-Lube	automatic greasing system
KFX-Tunnel-Set	specific system for tunnel works
KFX-Water-Set	stops water ingress
KM 690 40t	adapter for rigid mounting – up to 40t/88,000lbs
KM 690 50t	adapter for rigid mounting – up to 50t/110,000lbs
KM 690 70t	adapter for rigid mounting – up to 70t/154,000lbs
OQ	bolt-on adapter for OilQuick – up to 70t/154,000lbs
	adapters for quick change systems from other manufacturers or different sizes on request

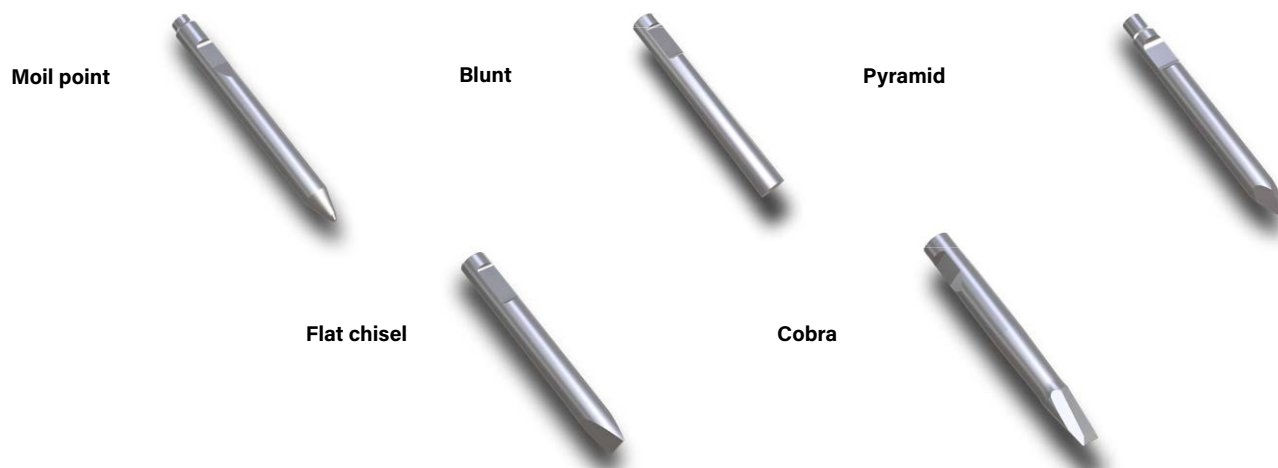
Drawings



Chisels for Breakers

KFX

Benefit from the large variety of chisels for different tasks.



Tools for KFX

Type	Suitable for	Diameter (mm/in)	Description
KFX 47 Moil Point	KFX 47	180 / 7.1	moil chisel for concrete, mediumhard and non-layered rock
KFX 47 Blunt	KFX 47	180 / 7.1	blunt chisel for reinforced concrete and highly compact rock
KFX 47 Pyramid	KFX 47	180 / 7.1	pyramid chisel for reinforced concrete and highly compact rock
KFX 47 Flat chisel	KFX 47	180 / 7.1	flat chisel chisel for medium-hard and layered rock
KFX 47 Cobra	KFX 47	180 / 7.1	cobra chisel for quarry works such as primary demolition and block reduction
KFX 58 Moil Point	KFX 58	180 / 7.1	moil chisel for concrete, mediumhard and non-layered rock
KFX 58 Blunt	KFX 58	180 / 7.1	blunt chisel for reinforced concrete and highly compact rock
KFX 58 Pyramid	KFX 58	180 / 7.1	pyramid chisel for reinforced concrete and highly compact rock
KFX 58 Flat chisel	KFX 58	180 / 7.1	flat chisel chisel for medium-hard and layered rock
KFX 58 Cobra	KFX 58	180 / 7.1	cobra chisel for quarry works such as primary demolition and block reduction
KFX 70 Moil Point	KFX 70	195 / 7.7	moil chisel for concrete, mediumhard and non-layered rock
KFX 70 Blunt	KFX 70	195 / 7.7	blunt chisel for reinforced concrete and highly compact rock
KFX 70 Pyramid	KFX 70	195 / 7.7	pyramid chisel for reinforced concrete and highly compact rock
KFX 70 Flat chisel	KFX 70	195 / 7.7	flat chisel chisel for medium-hard and layered rock
KFX 36 Cobra	KFX 70	195 / 7.7	cobra chisel for quarry works such as primary demolition and block reduction
KFX 80 Moil Point	KFX 80	195 / 7.7	moil chisel for concrete, mediumhard and non-layered rock
KFX 80 Blunt	KFX 80	195 / 7.7	blunt chisel for reinforced concrete and highly compact rock
KFX 80 Pyramid	KFX 80	195 / 7.7	pyramid chisel for reinforced concrete and highly compact rock
KFX 80 Flat chisel	KFX 80	195 / 7.7	flat chisel chisel for medium-hard and layered rock
KFX 80 Cobra	KFX 80	195 / 7.7	cobra chisel for quarry works such as primary demolition and block reduction
KFX 120 Moil Point	KFX 120	215 / 8.5	moil chisel for concrete, mediumhard and non-layered rock
KFX 120 Blunt	KFX 120	215 / 8.5	blunt chisel for reinforced concrete and highly compact rock
KFX 120 Pyramid	KFX 120	215 / 8.5	pyramid chisel for reinforced concrete and highly compact rock
KFX 120 Flat chisel	KFX 120	215 / 8.5	flat chisel chisel for medium-hard and layered rock
KFX 120 Cobra	KFX 120	215 / 8.5	cobra chisel for quarry works such as primary demolition and block reduction
KFX 150 Moil Point	KFX 150	255 / 10.0	moil chisel for concrete, mediumhard and non-layered rock
KFX 150 Blunt	KFX 150	255 / 10.0	blunt chisel for reinforced concrete and highly compact rock
KFX 150 Pyramid	KFX 150	255 / 10.0	pyramid chisel for reinforced concrete and highly compact rock
KFX 150 Flat chisel	KFX 150	255 / 10.0	flat chisel chisel for medium-hard and layered rock
KFX 150 Cobra	KFX 150	255 / 10.0	cobra chisel for quarry works such as primary demolition and block reduction
KFX 200 Moil Point	KFX 200	280 / 11.0	moil chisel for concrete, mediumhard and non-layered rock
KFX 200 Blunt	KFX 200	280 / 11.0	blunt chisel for reinforced concrete and highly compact rock
KFX 200 Pyramid	KFX 200	280 / 11.0	pyramid chisel for reinforced concrete and highly compact rock
KFX 200 Flat chisel	KFX 200	280 / 11.0	flat chisel chisel for medium-hard and layered rock
KFX 200 Cobra	KFX 200	280 / 11.0	cobra chisel for quarry works such as primary demolition and block reduction

Request? exc@kinshofer.com

Mounting Options for Hydraulic Attachments - rigid mount

KM 690 - adapter for rigid mount



Type	Operating weight (t/lbs)
KM 690 40t	up to 40 / 88,000
KM 690 50t	up to 50 / 110,000
KM 690 70t	up to 70 / 154,000

OQ - bolt-on adapter for system „Oilquick“ incl. hoses



Type	for attachments	Operating weight (t/lbs)
OQ80/2 rigid	breakers	25 - 43 / 55,000 - 94,600
OQ80/3 rigid	compactors, planers	25 - 43 / 55,000 - 94,600
OQ80/4 rigid	grabs, shears	25 - 43 / 55,000 - 94,600
OQ90/3 rigid	compactors, planers	50 - 70 / 110,000 - 154,000
OQ90/4 rigid	grabs, shears	50 - 70 / 110,000 - 154,000

SW - bolt-on adapter for system „Liebherr“



Type	Operating weight (t/lbs)
SW66 rigid	28 - 45 / 61,600 - 99,000
SW66 Likufix rigid*	28 - 45 / 61,600 - 99,000
SW77 rigid	45 - 60 / 99,000 - 132,000
SW77 Likufix rigid*	45 - 60 / 99,000 - 132,000

*incl. hoses

CW - bolt-on adapter for system „Verachtert“



Type	Operating weight (t/lbs)
CW45 rigid**	25 - 40 / 55,000 - 88,000
CW55 rigid**	35 - 65 / 77,000 - 143,000
CW70 rigid	65 - 90 / 143,000 - 198,000

**also available as smaller S-version

Note: adapters for quick change systems for other manufacturers or other sizes on request

KINSHOFER Branches

Hauptsitz Deutschland:
KINSHOFER GmbH
Raiffeisenstrasse 12
83607 Holzkirchen
Tel.: +49 (0) 8021 88 99 0
Email: info@kinshofer.com
www.kinshofer.com

United Kingdom:
KINSHOFER UK Ltd.
Shipton Downs Farm
Hazleton
Cheltenham, Gloucestershire, GL54 4DX
Tel.: +44 (0) 161 406 7046
Fax: +44 (0) 161 406 7014
Email: sales-uk@kinshofer.com
www.kinshofer.com

France:
KINSHOFER France S.A.R.L.
8 Bis, rue Gabriel Voisin, CS 40003
F-51688 Reims Cedex 2
Tel.: +33 (0) 3 88 39 55 00
Fax: +33 (0) 3 88 79 06 75
Email: sales-france@kinshofer.com
www.kinshofer.com

Canada:
KINSHOFER North America
5040 Mainway Drive, Unit #11
Burlington, ON L7L 7G5
Tel.: +1 (905) 335-2856
Fax: +1 (905) 335-4529
Toll Free (North America): 1-800-268-9525
Email: sales-northamerica@kinshofer.com
www.kinshofer.com

United States of America:
KINSHOFER USA
6420 Inducon Drive
Suite G
Sanborn, NY, 14132
Tel.: +1 (716) 731-4333
Toll Free (North America): 1-800-268-9525
Email: sales-usa@kinshofer.com
www.kinshofer.com



KINSHOFER is an
ISO 9001 certified Company.
DVS ZERT is a registered trademark
of DVS ZERT[®] e.V., Düsseldorf.

KINSHOFER Subsidiaries

Nederland:
DEMAREC B.V.
De Hork 32
NL-5431 NS Cuijk
Tel.: +31 (0) 485 442300
Fax: +31 (0) 485 442120
info@demarec.com
www.demarec.com

Sverige:
RF System AB
Furutorpsgatan 6
SE-288 34 Vinslöv
Tel.: +46 (0) 44 817 07
Fax: +46 (0) 44 859 63
Email: info@rf-system.se
www.rf-system.se

United Kingdom:
Auger Torque Europe Limited
Hazleton
Cheltenham, GL54 4DX
Tel.: +44 (0) 1451 861 652
Fax: +44 (0) 1451 861 660
Email: sales@augertorque.com
www.augertorque.com

Australia:
Auger Torque Australia Pty Ltd.
481 Boundary Road, Darra
Queensland 4076
Tel.: +61 (0) 7 3274 2077
Fax: +61 (0) 7 3274 5077
Email: sales@augertorque.com.au
www.augertorque.com.au

Australia:
Doherty Couplers & Attachments Ltd.
PO Box 701,
Annerley (Brisbane) QLD, 4103
Tel.: +61 1 800 057 021
Email: sales@dohertydirect.net
www.dohertydirect.net

New Zealand:
Doherty Engineered Attachments Ltd.
PO Box 9339, Greerton
Tauranga 3142
Tel.: +64 7 574 3000
Fax: +64 7 574 8030
Email: sales@dohertydirect.net
www.dohertydirect.net

United States of America:
Solesbee's LLC
2640 Jason Industrial Parkway
Winston, GA 30187
Toll Free (North America): 1-800-419-8090
Email: sales@solesbees.com
www.solesbees.com

中国:
Auger Torque China CO., Ltd.
Baoshan Rd, Tongyi Industry Zone
Dongwu, Yinzhou, Ningbo
China 315114
Tel.: + 86 (0) 574 8848 8181
Fax: + 86 (0) 574 8848 8687
Email: john.hu@attachmenttorque.com
www.augertorque.com

Italia:
Hammer S.r.l.
Via Oleifici dell' Italia Meridionale,
lotto G1
IT-70056 Molfetta BA
Tel.: +39 080 337 5317
Email: info@hammerurope.com
www.hammereurope.com

Italia:
Cangini Benne S.r.l.
Via Savio, 29/31 47027
IT-70056 Sarsina FC
Tel.: +39 0547 698020
Fax: +39 0547 698021
Email: cangini@canginibenne.com
www.canginibenne.com

Italia:
Trevi Benne S.p.A.
Via Bergoncino, 18
IT-36025 Noventa Vicentina VI
Tel.: +39 0444 760773
Fax: +39 0444 861182
Email: info@trevibenne.it
www.trevibenne.it

United Kingdom:
Prolec
25 Benson Road,
Nuffield Industrial Estate
Poole, BH17 0GB
Tel.: +44 1202 441 000
Email: enquiries@prolec.co.uk
safe.prolec.co.uk



KINSHOFER
GROUP COMPANY